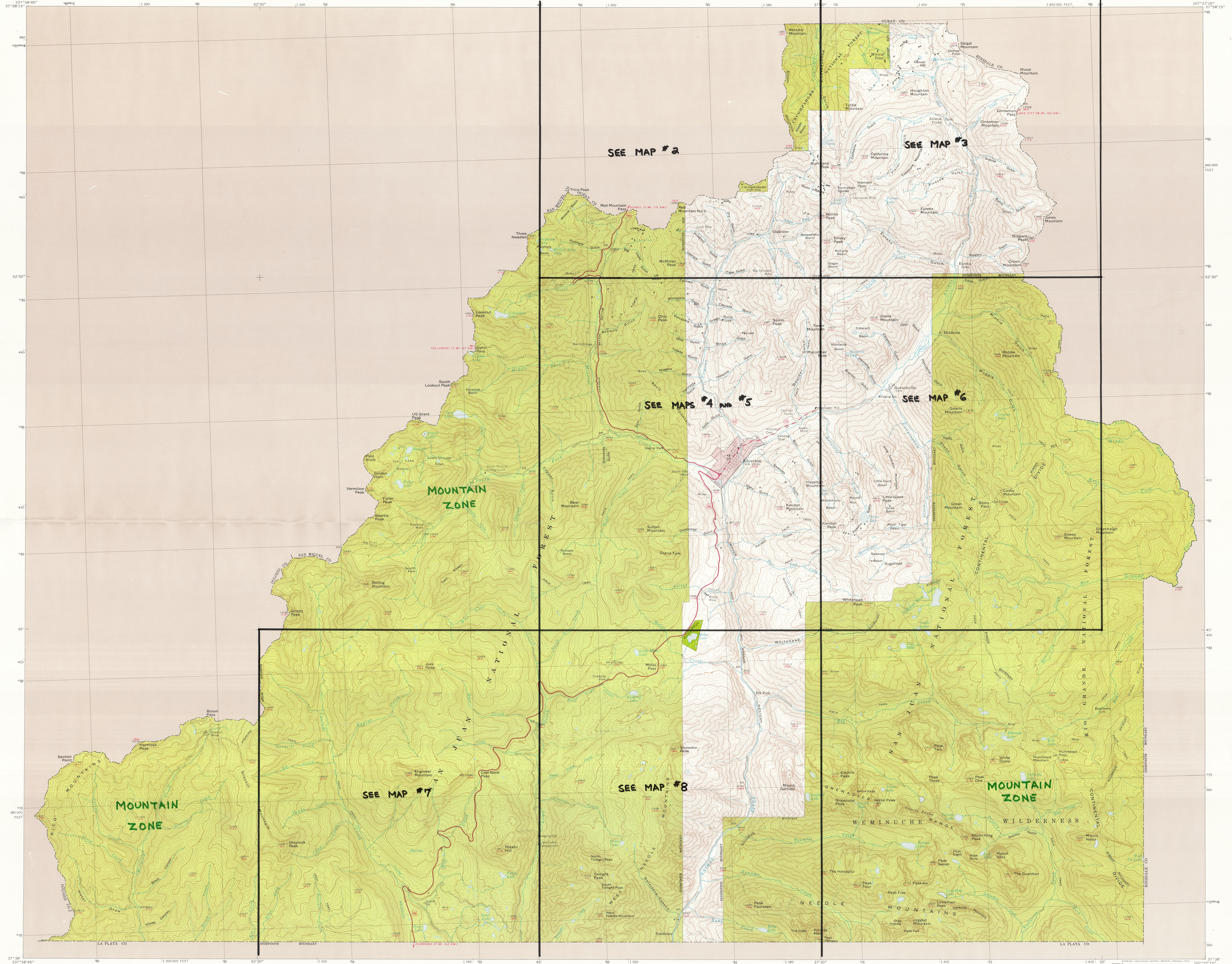


OFFICIAL ZONING AND LAND USE DISTRICT MAP OF
 SAN JUAN COUNTY, COLORADO
 MAP #1 (1 of 8)
 ADOPTED JULY 6, 1993

UNITED STATES
 DEPARTMENT OF THE INTERIOR
 GEOLOGICAL SURVEY

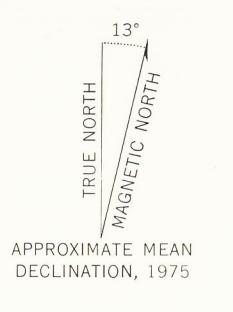
SAN JUAN COUNTY, COLORADO
 COUNTY MAP SERIES (TOPOGRAPHIC)



Mapped, edited, and published by the Geological Survey in cooperation with Colorado Division of Planning, Department of Local Affairs
 Compiled in 1975 from USGS 1:24,000-scale topographic maps dated 1955-1964. See index for dates of individual maps
 Partially revised from aerial photographs taken 1972 and from other official sources
 Projection and 20 000-foot grid ticks: Colorado coordinate system, south zone (Lambert conformal conic) 5000-metre Universal Transverse Mercator grid, zone 13. 1927 North American datum
 Red tint indicates areas within corporate boundaries or in which only landmark buildings are shown
 Where omitted, land lines have not been established or are not shown because of insufficient data

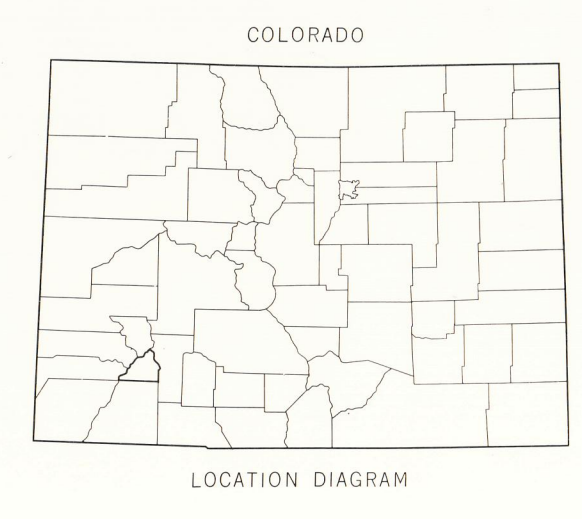
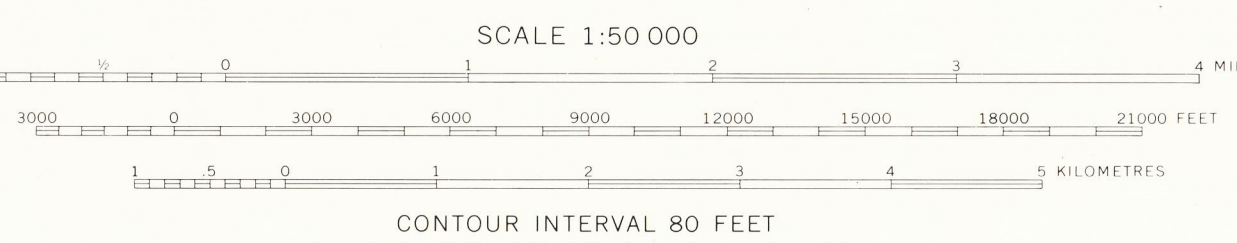
INDEX TO 1:24,000-SCALE MAPS

1	2	3	4
5	6	7	8
9	10	11	12
13	14	15	16



CONTOUR INTERVALS

1000	1200	1400	1600	1800	2000	2200	2400	2600	2800	3000	3200	3400	3600	3800	4000	4200	4400	4600	4800	5000
------	------	------	------	------	------	------	------	------	------	------	------	------	------	------	------	------	------	------	------	------



LEGEND

Perennial stream, lake	Light-duty road, hard or improved surface
Intermittent stream, lake	Secondary highway, hard surface
Public park or recreation area	Unimproved road
National and State Forest or game land area	Interstate Route
Other public area or Military or Indian Reservation	U.S. Route
	State Route

ROAD CLASSIFICATION

Primary highway, hard surface	Light-duty road, hard or improved surface
Secondary highway, hard surface	Unimproved road
Interstate Route	U.S. Route
	State Route

SAN JUAN COUNTY, COLORADO
 N3738-W10727-25X20-25X31.5

1975

William C. Norman