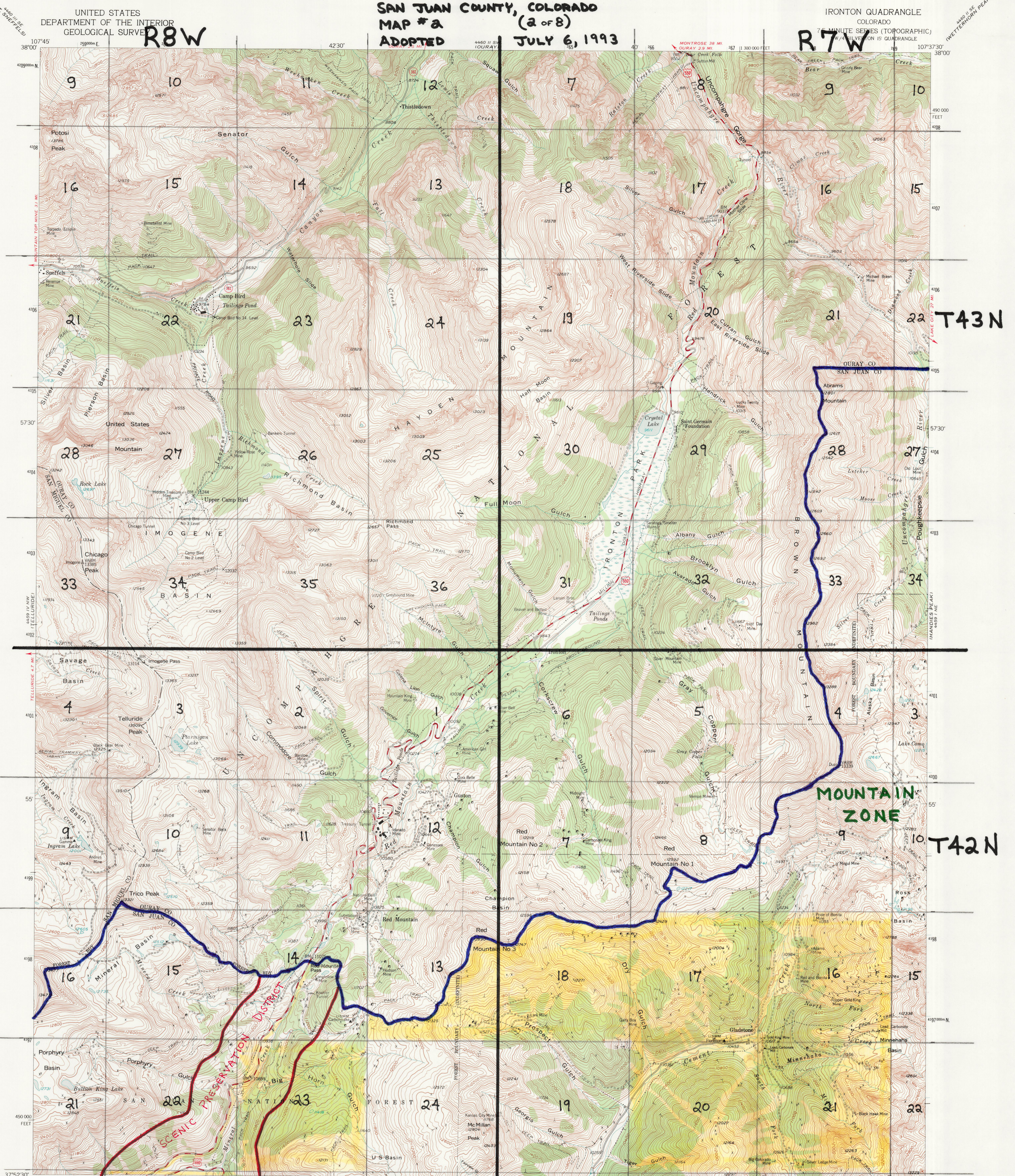
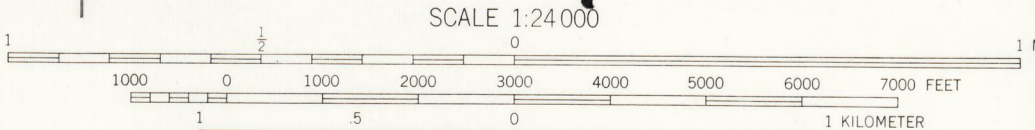
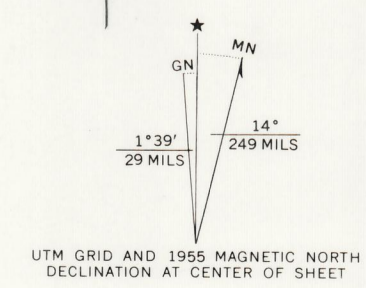


**OFFICIAL ZONING AND LAND USE DISTRICT MAP OF
SAN JUAN COUNTY, COLORADO
MAP #2 (2 of 8)
ADOPTED JULY 6, 1993**

IRONTON QUADRANGLE
COLORADO
7 1/2 MINUTE SERIES (TOPOGRAPHIC)
W/4 SILVERTON IS QUADRANGLE

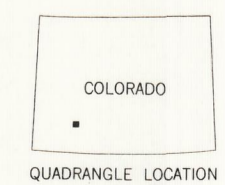


Mapped, edited, and published by the Geological Survey
Control by USGS and USC&GS
Topography from aerial photographs by multiplex methods
Aerial photographs taken 1951. Field check 1955
Polyconic projection. 1927 North American datum
10,000-foot grid based on Colorado coordinate system,
south zone
Land lines within this quadrangle (T_s. 42 and 43 N.-Rs. 7 and 8 W.)
are omitted because of alleged fraud or defects in the surveys.
Unchecked elevations are shown in brown
1000-meter Universal Transverse Mercator grid ticks,
zone 13, shown in blue



CONTOUR INTERVAL 40 FEET
DATUM IS MEAN SEA LEVEL
[Yellow Box] = HISTORIC PRESERVATION DISTRICT

THIS MAP COMPLIES WITH NATIONAL MAP ACCURACY STANDARDS
FOR SALE BY U. S. GEOLOGICAL SURVEY, DENVER, COLORADO 80225, OR WASHINGTON, D. C. 20242
A FOLDER DESCRIBING TOPOGRAPHIC MAPS AND SYMBOLS IS AVAILABLE ON REQUEST



ROAD CLASSIFICATION
Medium duty — Light duty
Unimproved dirt — State Route

IRONTON, COLO.
NW/4 SILVERTON IS QUADRANGLE
N3752.5-W10737.5/7.5

1955
AMS 4459 I NW-SERIES V877

William C. Norman