

OFFICIAL ZONING AND LAND USE DISTRICT MAP OF
 SAN JUAN COUNTY, COLORADO
 MAP #3 (3 OF 8)
 ADOPTED JULY 6, 1993

HANDIES PEAK QUADRANGLE
 COLORADO
 7.5 MINUTE SERIES (TOPOGRAPHIC)
 NE/4 SILVERTON 15 QUADRANGLE

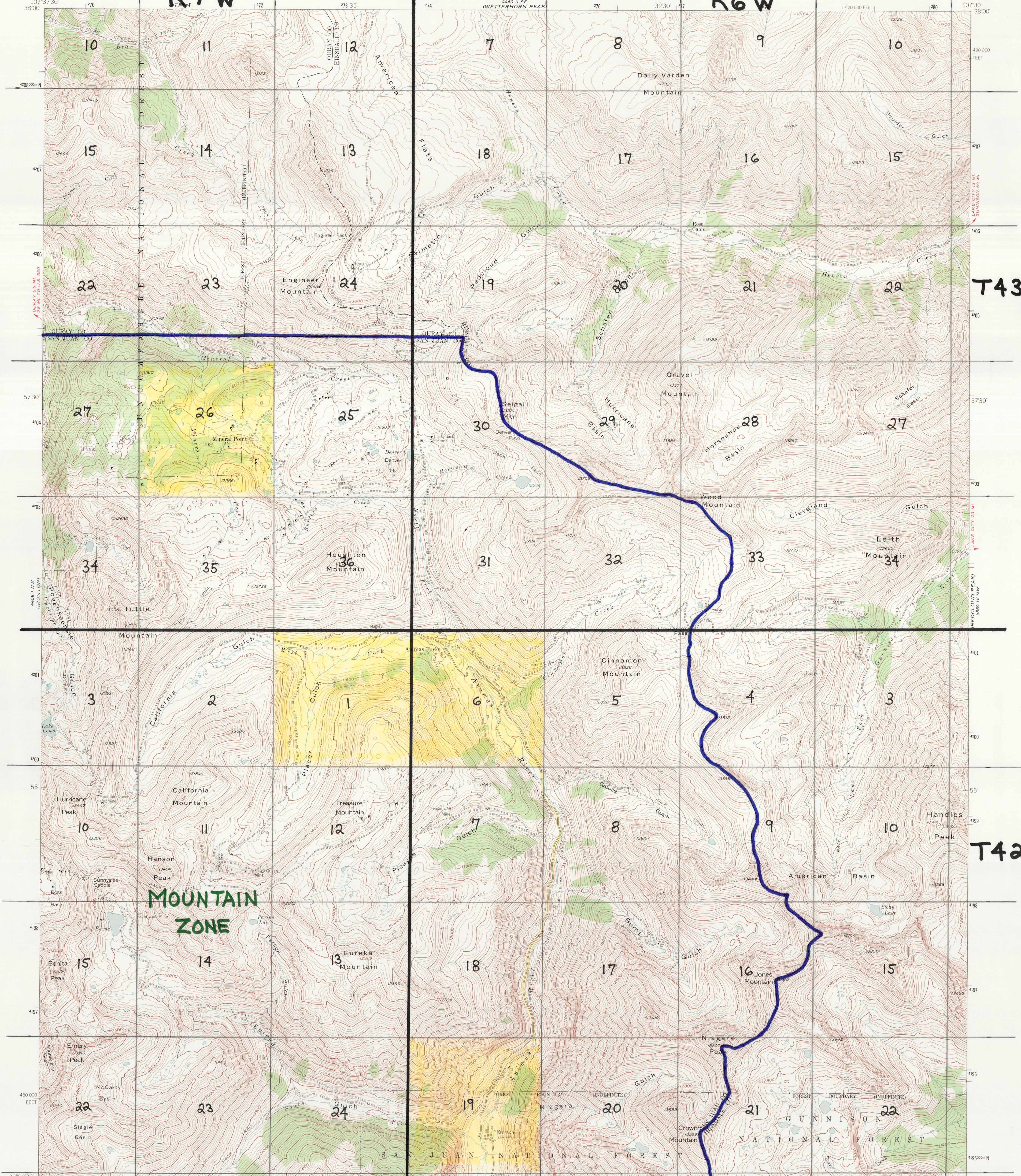
UNITED STATES
 DEPARTMENT OF THE INTERIOR
 GEOLOGICAL SURVEY

R7W

R6W

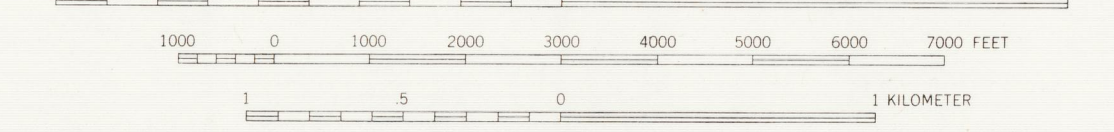
T43N

T42N



MOUNTAIN
 ZONE

SCALE 1:24000

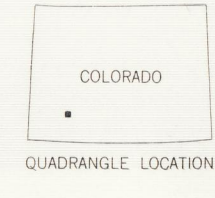
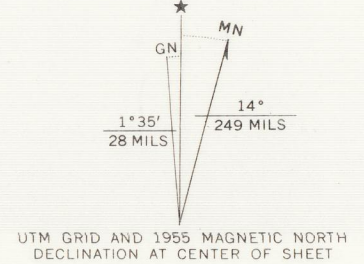


CONTOUR INTERVAL 40 FEET
 DATUM IS MEAN SEA LEVEL

☐ = HISTORIC PRESERVATION DISTRICT

THIS MAP COMPLIES WITH NATIONAL MAP ACCURACY STANDARDS
 FOR SALE BY U. S. GEOLOGICAL SURVEY, DENVER, COLORADO 80225 OR WASHINGTON, D. C. 20242
 A FOLDER DESCRIBING TOPOGRAPHIC MAPS AND SYMBOLS IS AVAILABLE ON REQUEST

Mapped, edited, and published by the Geological Survey
 Control by USGS and USC&GS
 Topography from aerial photographs by multiplex methods
 Aerial photographs taken 1951 Field check 1955
 Polyconic projection, 1927 North American datum
 10,000-foot grid based on Colorado coordinate system,
 south zone
 Land lines within this quadrangle (Tps. 42 and 43 N. and
 Rs. 6 and 7 W.) are omitted because of alleged fraud or
 defects in the surveys
 Unchecked elevations are shown in brown
 1000-meter Universal Transverse Mercator grid ticks,
 zone 13, shown in blue



HANDIES PEAK, COLO.
 NE/4 SILVERTON 15 QUADRANGLE
 N3752.5-W10730.7.5

1955

AMS 4459 1 NE-SERIES V877

William C. Norman