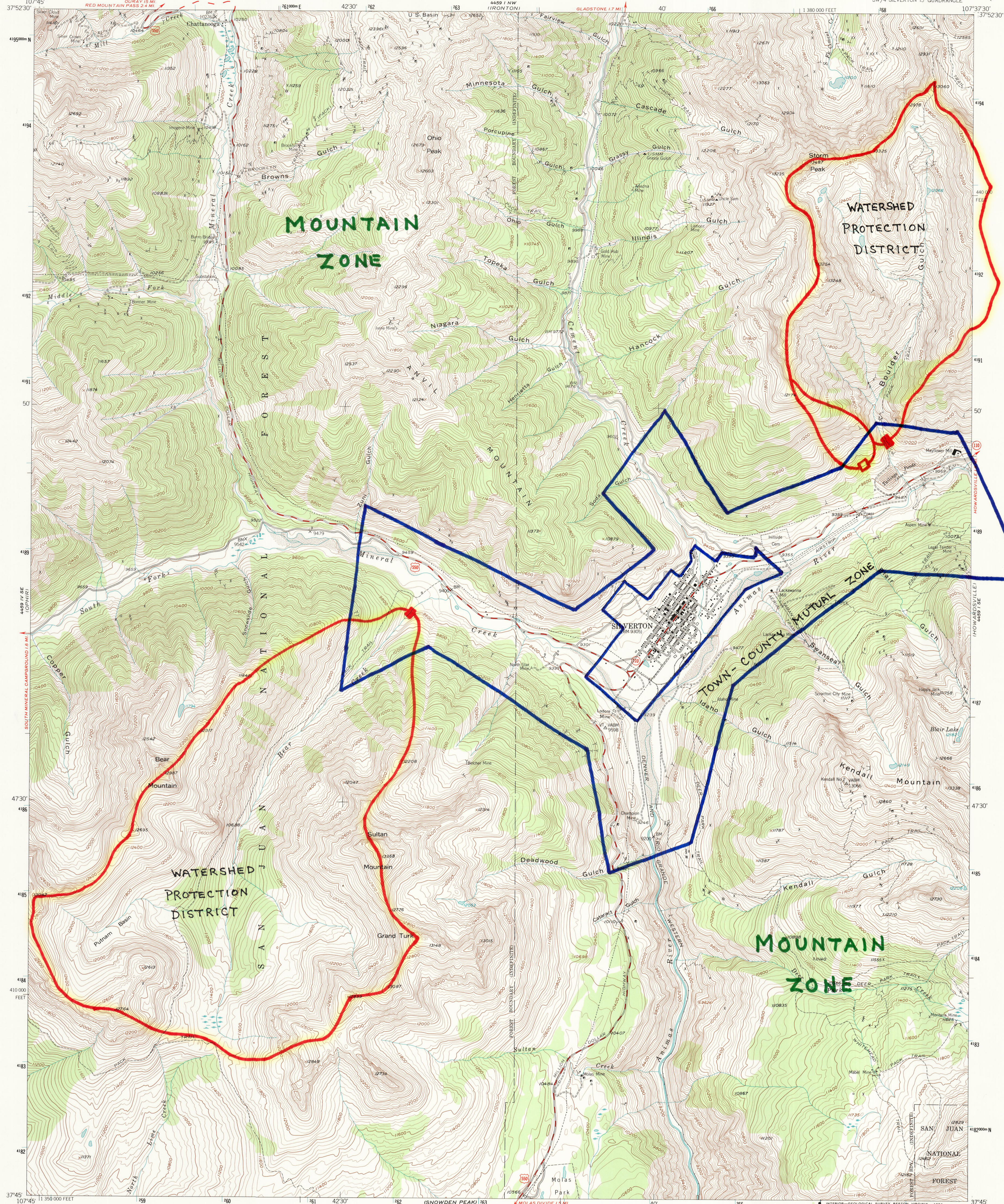


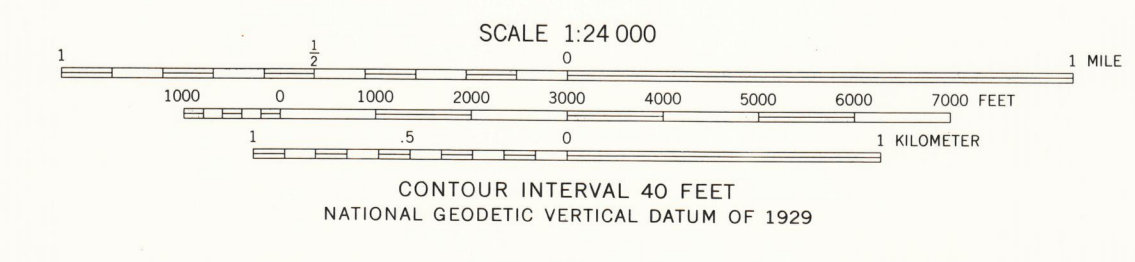
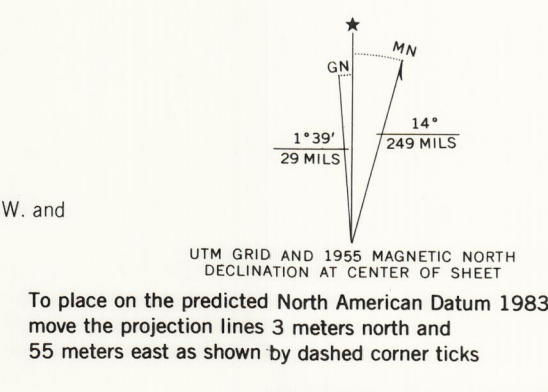
OFFICIAL ZONING AND LAND USE DISTRICT MAP OF
 SAN JUAN COUNTY, COLORADO
 MAP #4 (4 of 8)
 ADOPTED JULY 6, 1993

SILVERTON QUADRANGLE
 COLORADO-SAN JUAN CO.
 7.5 MINUTE SERIES (TOPOGRAPHIC)
 SW/4 SILVERTON 15 QUADRANGLE

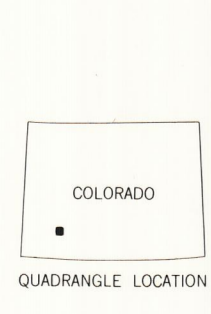
UNITED STATES
 DEPARTMENT OF THE INTERIOR
 GEOLOGICAL SURVEY



Mapped, edited, and published by the Geological Survey
 Control by USGS and USC&GS
 Topography from aerial photographs by multiplex methods
 Aerial photographs taken 1951. Field check 1955
 Polyconic projection. 1927 North American Datum
 10,000-foot grid based on Colorado coordinate system,
 south zone
 Land lines are omitted in T. 40 N., T. 41 N., and T. 42 N. R. 7 W. and
 R. 8 W. because of insufficient data
 Unchecked elevations are shown in brown
 1000-meter Universal Transverse Mercator grid ticks,
 zone 13, shown in blue
 There may be private inholdings within the boundaries of
 the National or State reservations shown on this map



THIS MAP COMPLIES WITH NATIONAL MAP ACCURACY STANDARDS
 FOR SALE BY U. S. GEOLOGICAL SURVEY, DENVER, COLORADO 80225, OR RESTON, VIRGINIA 22092
 A FOLDER DESCRIBING TOPOGRAPHIC MAPS AND SYMBOLS IS AVAILABLE ON REQUEST



ROAD CLASSIFICATION

Medium-duty	Light-duty
Unimproved dirt	
U. S. Route	State Route

SILVERTON, COLO.
 SW/4 SILVERTON 15 QUADRANGLE
 37107-G6-TF-024
 1955
 DMA 4459 I SW-SERIES V877

William C. Norman