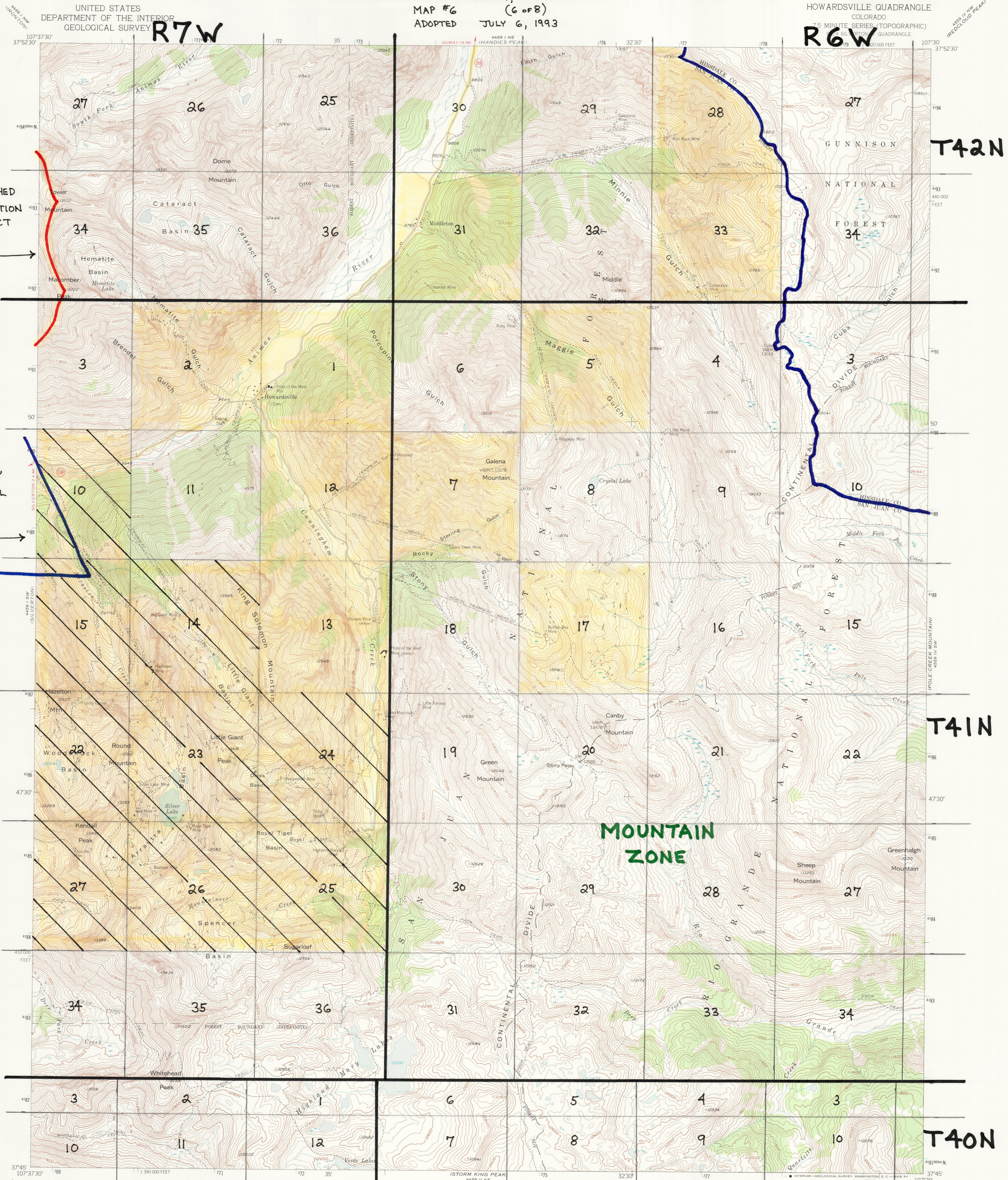


OFFICIAL ZONING AND LAND USE DISTRICT MAP OF
 SAN JUAN COUNTY, COLORADO
 MAP #6 (6 of 8)
 ADOPTED JULY 6, 1993

HOWARDSVILLE QUADRANGLE
 COLORADO
 7.5 MINUTE SERIES (TOPOGRAPHIC)
 SILVERTON QUADRANGLE



WATERSHED
 PROTECTION
 DISTRICT

TOWN-COUNTY
 MUTUAL
 ZONE

**MOUNTAIN
 ZONE**

R7W

R6W

T42N

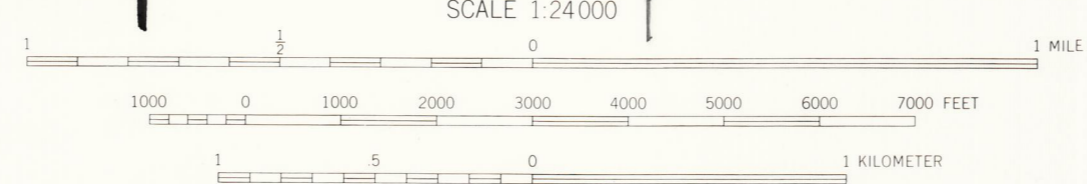
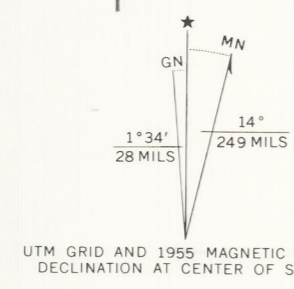
T41N

T40N

Mapped, edited, and published by the Geological Survey
 Control by USGS

Topography from aerial photographs by multiplex methods
 Aerial photographs taken 1951. Field check 1955
 Polyconic projection, 1927 North American datum
 10,000-foot grid based on Colorado coordinate system,
 south zone

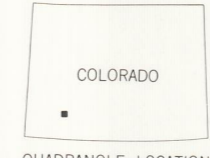
Land lines are omitted in T. 40 N., T. 41 N., and T. 42 N., R. 6 W.
 and R. 7 W. because of insufficient data
 All mining features on this map are inactive unless otherwise indicated
 Unchecked elevations are shown in brown
 1000-meter Universal Transverse Mercator grid ticks,
 zone 13, shown in blue



CONTOUR INTERVAL 40 FEET
 DATUM IS MEAN SEA LEVEL

[Red outline box] = HISTORIC PRESERVATION DISTRICT

[Blue outline box] = MINERAL RESOURCE DISTRICT



ROAD CLASSIFICATION
 Light-duty ————— Unimproved dirt —————
 State Route ○

HOWARDSVILLE, COLO.
 SE/4 SILVERTON 15 QUADRANGLE
 N3745-W10730/7.5

1955

AMS 4459 I SE-SERIES V877

William C. Norman