

R9W

R8W

T40N

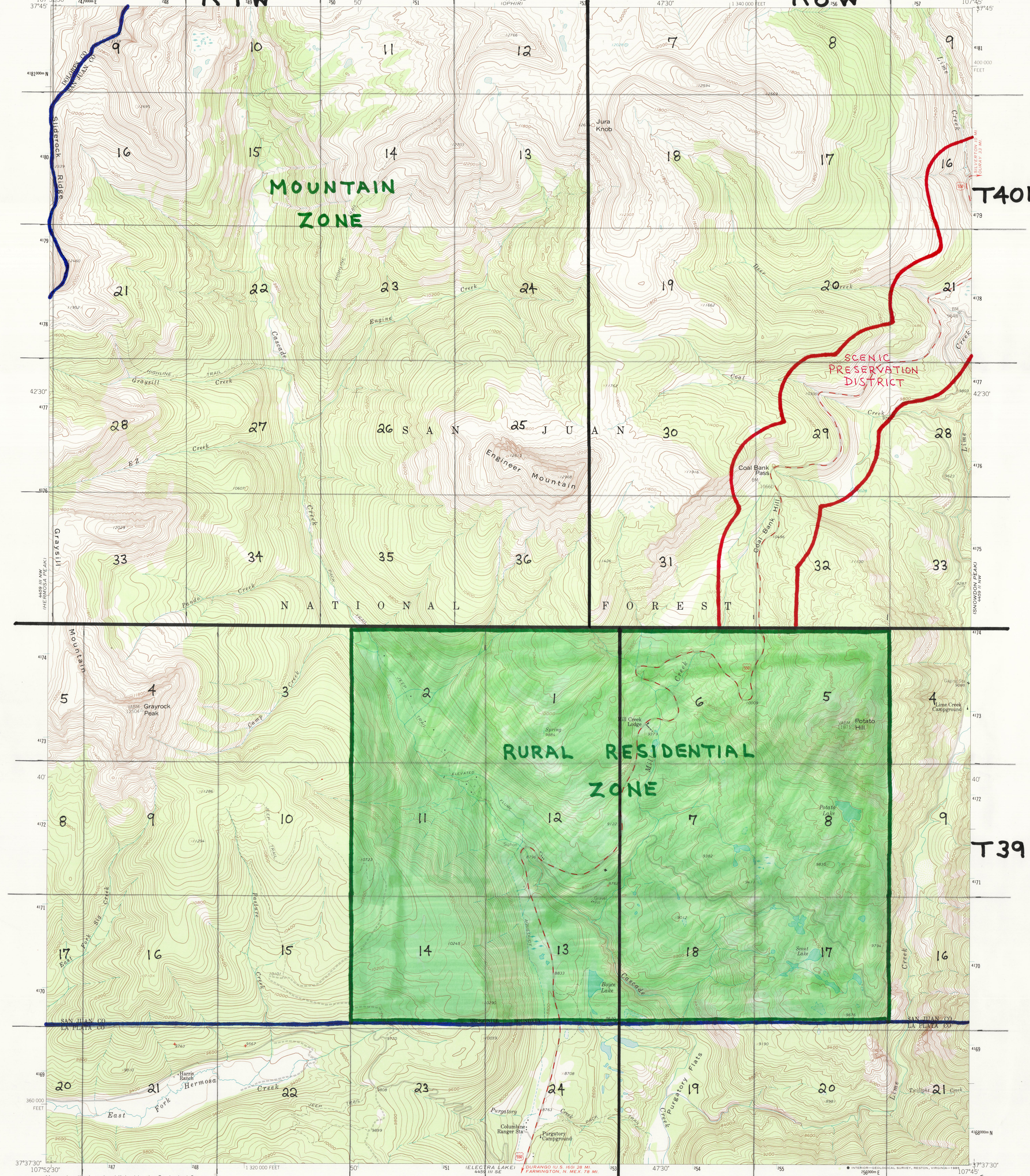
T39N

MOUNTAIN  
ZONE

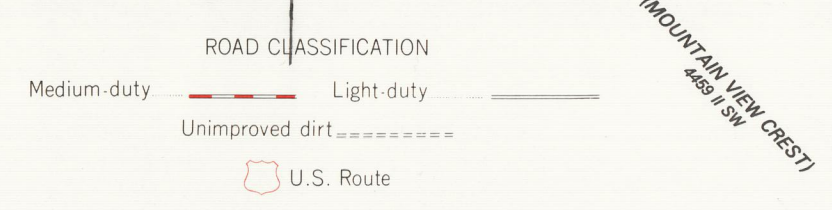
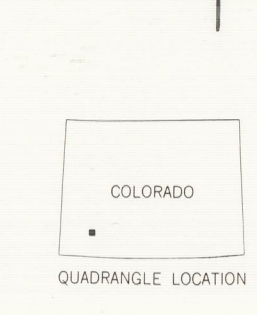
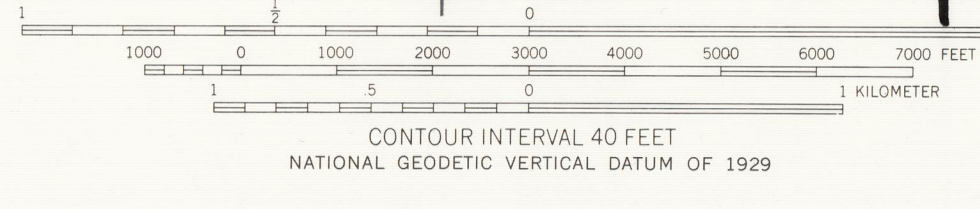
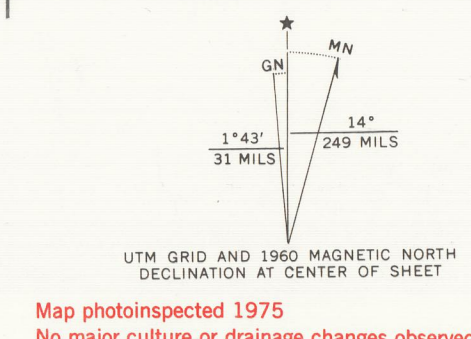
RURAL RESIDENTIAL  
ZONE

SCENIC  
PRESERVATION  
DISTRICT

SAN JUAN NATIONAL FOREST



Maped, edited, and published by the Geological Survey  
Control by USGS and USC&GS  
Topography by photogrammetric methods from aerial  
photographs taken 1956. Field checked 1960  
Polyconic projection. 1927 North American Datum  
10,000-foot grid based on Colorado coordinate system,  
south zone  
1000-meter Universal Transverse Mercator grid ticks,  
zone 13, shown in blue  
Land lines omitted because of insufficient data  
All recovered corners are shown  
To place on the predicted North American Datum 1983  
move the projection lines 3 meters north and  
55 meters east as shown by dashed corner ticks  
There may be private inholdings within the boundaries of  
the National or State reservations shown on this map



THIS MAP COMPLIES WITH NATIONAL MAP ACCURACY STANDARDS  
FOR SALE BY U.S. GEOLOGICAL SURVEY, DENVER, COLORADO 80225, OR RESTON, VIRGINIA 22092  
A FOLDER DESCRIBING TOPOGRAPHIC MAPS AND SYMBOLS IS AVAILABLE ON REQUEST

ENGINEER MOUNTAIN, COLO.  
NE/4 ENGINEER MOUNTAIN 15 QUADRANGLE  
37107-F7-TF-024

1960  
PHOTOINSPECTED 1975  
DMA 4459 III NE-SERIES Y877

William C. Norman