

SAN JUAN COUNTY, COLORADO
BOARD OF COMMISSIONERS MEETING AGENDA

September 14, 2022

Due to COVID-19, San Juan County meetings will be conducted in a hybrid virtual/in-person format. All persons including Board Members, Staff and those with appointments scheduled on the agenda may meet in person or via zoom. For anyone attending the meeting in person and especially at risk participants are strongly encouraged to wear a mask. We encourage community members to participate via zoom. The information necessary to connect to the public meeting is listed below.

CALL TO ORDER: 8:30 A.M.

OLD BUSINESS:

Consider Bills and Authorize Warrants
BOCC Regular Meeting Minutes for August 24, 2022

APPOINTMENTS:

8:40 A.M. - Becky Joyce, Public Health Director
9:00 A.M. - Martha Johnson, Social Services Director
9:30 A.M. - Resolution No. 2022-07 - Supporting The Silverton Singletrack Society's Grant Application For A Community Impact Program Grant From The State Board Of The Great Outdoors Colorado Trust Fund And For The Completion Of The Baker's Park Trail System
10:00 A.M. - BLM – Melissa Smeins and Lisa Merrill, Midway Road Closures Update
Other

Lunch – Location to be determined

CORRESPONDENCE:

Peter Merkel – San Juan National Forest

NEW BUSINESS:

Stormwater Discharges Associated with Active and Inactive Industrial Activity COR040000
Treasurer's Report
Sales Tax Update
2021 Audit
November Meeting Dates
Public Comment
Commissioner and Staff Reports

OTHER:

ADJOURN: Next Regular Meeting – 6:30 PM, Wednesday September 28, 2022

Join Zoom Meeting

<https://zoom.us/j/92136473203>

Meeting ID: 921 3647 3203

One tap mobile

+16699006833,,92136473203# US (San Jose)

+12532158782,,92136473203# US (Tacoma)

Dial by your location

+1 669 900 6833 US (San Jose)

SAN JUAN COUNTY BOARD OF COMMISSIONERS MET SEPTEMBER 14, 2022
AND THE FOLLOWING BILLS WERE APPROVED FOR PAYMENT.

23816	ANTHEM BLUE CROSS	MEDICAL INSURANCE	15082.17
23817	GRAN FARNUM PRINTING	ELECTION ENVELOPES	341.00
23818	CITIZENS STATE BANK	AUG 22 ANVIL PAYMENT	5558.98
23819	CITIZENS STATE BANK	SEPT ANVIL PAYMENT	5558.98
DD	ABIGAIL H ARMISTEAD	SHERIFF DEPUTY WAGES	3415.44
DD	AMIE R. BIOCCHI	NURSE ASSISTANT WAGES	3508.11
DD	ANTHONY D. EDWARDS	COMMUNICATIONS WAGES	2521.20
DD	ARTHUR J. DONOVAN	EPD WAGES	4459.57
DD	AUSTIN P. LASHLEY	COMMISSIONERS WAGES	273.91
DD	BRUCE T. CONRAD	SHERIFF WAGES	3910.38
DD	DEANNA M. JARAMILLO	TREASURERS WAGES	3314.23
DD	ELIZABETH KREMER	ED PAY	1443.75
DD	ERNEST F. KUHLMAN	COMMISSIONERS WAGES	1991.91
DD	JOHN A. JACOBS	SHERIFF DEPUTY WAGES	2833.92
DD	KERI METZLER	CORONER WAGES	902.31
DD	KIMBERLY A. BUCK	ASSESSORS WAGES	3861.94
DD	KRISTINA L. RHOADES	SOCIAL SERVICE WAGES	2405.54
DD	LADONNA L. JARAMILLO	COUNTY CLERK WAGES	3273.72
DD	LOIS MACKENZIE	NURSE ASSISTANT WAGES	1129.33
DD	REBECCA B. JOYCE	NURSES WAGES	6505.21
DD	REBECCA J RHOADES	CUSTODIAN WAGES	1104.39
DD	STEPHEN W. LOWRANCE	UNDERSHERIFF WAGES	3903.71
23820	EMMA VIGERS	NURSE ASSISTANT WAGES	313.99
23821	EVELYN ARCHULETA	DEPUTY CLERK VAC PAY	446.75
23822	LISA M. ADAIR	PLANNER WAGES	1860.64
23823	SCOTT L. FETCHENHIER	COMMISSIONERS WAGES	2034.91
23824	TOMMY WIPF	VETS OFFICER WAGES	354.40
23825	WILLIAM A. TOOKEY	ADMINISTRATOR WAGES	4563.99
23826	CITIZENS STATE BANK	FEDERAL TAXES WITHHELD	20907.68
23827	CITIZENS STATE BANK	STATE TAXES WITHHELD	3361.00
23828	GREAT-WEST LIFE	GROUP RETIREMENT	6874.37
23829	CITIZENS STATE BANK	H S A SAVINGS	1500.00
23830	KANSAS CITY LIFE	DENTAL & LIFE INSURANCE	847.01
23831	VOID		
23832	AFLAC	INDIVIDUAL INSURANCE	177.10
23833	AMAZON CAPITAL SERVICES	CUSTODIAN SUPPLIES	74.46
23834	AMEINS GROUP BENEFITS	VISION INSURANCE	161.75
23835	SILVERTON ELECTRIC	FIX BACK DOOR OPENER	117.50
23836	VISA	BILLS	6959.01
23837	VISA	COMMUNICATIONS BILL	956.93
23838	SAN MIGUEL POWER	BILLS	3204.44
23839	ERNEST F. KUHLMAN	REFUND SUPPLEMENTAL	198.28
23840	DR. JOEL INC	CHECK COMPUTER SETTING	95.00
23841	VERIZON	SHERIFFS BILL	189.35

23842 WEX BANK	SHERIFFS FUEL	1545.43
23843 ROCK ENVIRONMENTAL SERVICES	NURSES BILL	400.00
23844 ROB GARDINER	NURSE FINANCE HELP PAY	600.00
23845 LORETTA ST GEORGE	HOSPITAL DEEP CLEANING	155.00
23846 DAYNA KRANKER	NURSE ASSISTANT PAY	1235.00
23847 BUSINESS OPTIONS	BOP.10039	135.00
23848 COLORADO DORONERS ASSOC	REGISTRATION (TRAINING)	900.00
23849 DENNIS R. GOLBRICHT	SERVICES RENDERED	5912.50
23850 AMBULANCE ASSOCIATION	SALES TAX MONTHLY PYMT	38333.33
23851 VOID		
23852 IMAGENET	SHERIFFS BILL	107.42
23853 BLAIR AND ASSOCIATES PC	FINISHED 2021 AUDIT	12900.00
23854 STATE OF COLORADO DPA ACCT	RENEW-TITLE-REG	51.60
23855 SILVERTON HARDWARE	BILLS	88.81
23856 COLORADO LABOR LAW POSTER	2023 STATE & FEDERAL POST	99.50
23857 SILVERTON GROCERY	CUSTODIAN BILL	4.59
23858 SILVERTON LP GAS	COURTHOUSE TANK FILL UP	1375.55
23859 PEI	PERIODIC INSPECTION-FEE	300.00
23860 REPLACED CHECK # 23696	8-Jun-22	
23861 CENTURY LINK	ELEVATOR ROOM	757.10
23862 DEANNE GALLEGOS	EMERGENCY MANAGEMENT	953.04
23863 SOUTHWEST APPLIANCE	REPLACE WASHER & DRYER	1545.19
23864 AMBULANCE ASSOCIATION	AUG 22 MONTHLY PAYMENT	7200.00
23865 ANGEL ARMOR	SHERIFFS BILL	3296.00
23866 CENTURY LINK	SHERIFFS BILL	358.21
23867 CENTURY LINK	SHERIFFS BILL	72.22
23868 AXXIS AUDIO	AGREEMENT (MINERS)	240.00
23869 MOUNTAIN STUDIES	REDI GRANT REIMB	20477.13
TOTAL GENERAL		231540.88

ROAD

6904	ANTHEM BLUE CROSS	MEDICAL INSURANCE	2250.12
6905	CATERPILLAR	BILL	10.50
DD	DAVID L. ANDREWS	ROAD FOREMAN WAGES	3612.48
DD	LOUIS K. GIRODO	ROAD OVERSEER WAGES	4431.32
DD	MICHAEL C. MAXFIELD	ROAD OPERATOR WAGES	3477.81
6906	CITIZENS STATE BANK	FEDERAL TAXES WITHHELD	4185.06
6907	CITIZENS STATE BANK	STATE TAXES WITHHELD	654.00
6908	GREAT-WEST LIFE	GROUP RETIREMENT	946.08
6909	CITIZENS STATE BANK	H S A SAVINGS	200.00
6910	KANSAS CITY LIFE	DENTAL & LIFE INSURANCE	238.40
6911	AMWINS GROUP BENEFITS	VISION INSURANCE	38.03
6912	AFLAC	INDIVIUAL INSURANCE	62.01
6913	VISA	BILL	1007.44
6914	SAN MIGUEL POWER	BILLS	228.77
6915	FOUR CORNERS WELDING	KOX-MAC	45.00
6916	HONNEN EQUIPMENT	SUPPLIES	539.08
6917	WAGNER	PARTS	3114.21
6918	FOUR STATES TIRE & SERVICE	TIRES	8844.72
6919	CENTURY LINK	BILL	154.35
6920	DAVID L. ANDREWS	REIMB SUPPLIES	120.28
	TOTAL ROAD		34159.66
1082	SJC TOURISM BOARD	LODGING TAX	20000.00

GENERAL	231540.88
ROAD	34159.66
TOURISM	20000.00
TOTAL ALL FUNDS	285700.54

WERE ALLOWED SETTLEMENT IN FULL BY ORDER OF SAN JUAN COUNTY COMMISSIONERS.

SCOTT L. FETCHENHIER, CHAIRMAN

EREST F. KUHLMAN, COMMISSIONER_

AUSTIN LASHLEY, COMMISSIONER

LADONNA L. JARAMILLO

SAN JUAN COUNTY BOARD OF COMMISSIONERS
REGULAR MEETING WEDNESDAY, AUGUST 24, 2022
AT 6:30 P.M.

Call to Order: The meeting was called to order by Chairman Scott Fetchenhier. Present were Commissioners Ernest Kuhlman via Zoom , Austin Lashley, County Attorney Dennis Golbricht and Administrator William Tookey.

Commissioner Lashley moved to approve the minutes of August 10, 2022, with the correction of the BLM discussion correct dispensed to dispersed camping and to add signage as a topic discussed. Commissioner Fetchenhier seconded the motion. The motion passed unanimously.

Public Health Director Becky Joyce was present to request approval from the Commissioners to contract with a Behavioral Specialist Counselor. Commissioner Lashley moved to authorize public health to use grant funding to provide mental health services. Commissioner Kuhlman seconded the motion. The motion passed unanimously.

Nick Anesi was present via Zoom to request that the Commissioners move the county road easement as it goes through the Carolina Mill Site. The Commissioners recognize that this is a unique situation and that moving the road easement would provide the benefit to the county of improved screening. Commissioner Fetchenhier moved to provide a variance to move the county road easement to the uphill side of the Carolina Mill Site as shown on the plat. Commissioner Lashley seconded the motion. The motion passed unanimously.

Emergency Manager Jim Donovan was present to provide the Commissioners with and update and to request that the emergency services sales tax appropriated to Search and Rescue be amended. The total amount would remain the same but the uses would change based upon current needs. Commissioner Lashley moved to approve the Search and Rescue appropriations as requested. Commissioner Fetchenhier seconded the motion. The motion passed unanimously.

Mr. Donovan informed the Commissioners that emergency services are working on an Emergency Preparedness Assessment as required by the state. He also noted that he was doing Covid testing at the Town's sewer plant.

Klem and Lisa Branner were present to request support for grants that the Single Track Society were planning on submitting. Commissioner Lashley moved to provide a letter of support for a GOCO Conservation Core Grant in the amount of \$50,000. Commissioner Fetchenhier seconded the motion. The motion passed unanimously. Commissioner Lashley moved to provide a letter of support for a \$250,000 CPW grant. Commissioner Fetchenhier seconded the motion. The motion passed unanimously.

The 2021 Audit was presented to the Commissioners for their consideration.

It was the consensus of the Commissioners to provide a letter of support for proposed Good Samaritan legislation.

Having no further business, the meeting adjourned at 8:22 P.M.

Scott Fetchenhier, Chairman

Ladonna L. Jaramillo, County Clerk



Willy Tookey <admin@sanjuancolorado.us>

The Mobile Vaccine Bus will come to Silverton Sept 13th and 20th

2 messages

SJC CO Office of Emergency Management <pio@sanjuancolorado.us>

Mon, Sep 12, 2022 at 11:05 AM

Reply-To: pio@sanjuancolorado.us

To: administrator@sanjuancolorado.us



PRESS RELEASE 9/12/22

The Mobile Vaccine Bus will come to Silverton Sept 13th and 20th (Tuesdays, 12-6pm at the Miners Hospital) for the new bivalent vaccines. The bus will continue to come every Tuesday afternoon in October and November, weather pending.

*Anyone 12 years old and up and who has not received a MRNA booster in the past 2 months is eligible for the new COVID bivalent booster. San Juan County Public Health encourage anyone, including their staff to get the new booster as it will help protect against the Omicron variant (BA4 and 5) that has been circulating since the late Spring. They will also carry flu vaccines~let's have a healthy, productive winter!

POWER THE COMEBACK

VACCINE MOBILE BUS

NEXT STOP!

Miner's Union Hospital
(parking lot)
1315 Snowden St.
Silverton, CO 81433

Tuesday, 09/13/2022 12pm - 6pm AND Tuesday, 09/20/2022 12pm - 6pm

New Omicron Boosters Available

Appointments are recommended for faster service. Walk-ups are welcome. It is easy to make an appointment at Mobilevac.us website or use the QR code!

Vaccines are free, and no ID, insurance, or appointment is needed! If you are getting a follow-up dose, please bring your CDC vaccine card.

###

Please direct all media inquiries to San Juan County Public Information Officer DeAnne Gallegos at (970) 403-9951 or pio@sanjuancolorado.us

To sign up for the updates from the Office of Emergency Management email pio@sanjuancolorado.us to get on the email list. Make sure to sign up for emergency alerts through Nixle for San Juan County. Text 81433 to 888-777.

Thank you.

	Jan 23	Feb 23	Mar 23	Apr 23	May 23	Jun 23	Jul 23	Aug 23	Sep 23	Oct 23	Nov 23	Dec 23	Jan - Dec 23
me/Expense													
101 REVENUE-State Alloc	10,311	10,311	10,311	10,311	10,311	18,831	10,311	10,311	10,311	10,311	10,311	18,831	140,770
110 Property Tax Current	2,000	2,000	2,000	3,600	3,500	1,000	1,000	0	0	0	0	0	15,100
120 Specific Ownership tax	110	110	110	225	450	200	50	50	50	50	50	50	1,505
140 Penalties/Int on Tax	6	6	6	6	6	6	6	6	6	6	6	6	72
145 REVENUE-CSBG Grant	500	0	0	0	0	0	0	0	0	0	0	0	1,000
180 REVENUE-EOC	40	40	40	40	40	40	40	40	40	40	40	40	480
ame	12,967	12,467	12,467	14,182	14,307	20,077	11,407	10,407	10,407	10,407	10,407	19,427	158,927
100 EXPENSE-Administration	6,000	6,000	6,000	6,000	6,000	6,000	6,000	6,000	6,000	6,000	6,000	5,000	71,000
110 EXPENSE-Adult Protectio	120	120	120	120	120	120	120	120	120	120	120	120	1,440
120 EXPENSE-Child Care	50	50	50	50	50	50	50	50	50	50	50	50	600
130 EXPENSE-Child Support	27	27	27	27	27	27	27	27	27	27	27	27	324
140 EXPENSE-Child Welfare	84	84	84	84	83	83	83	83	83	83	83	83	1,000
145 EXPENSE-CSBG Grant	500	0	0	0	0	0	0	0	0	0	0	0	1,000
150 EXPENSE-Colorado Works	3,750	3,750	3,750	3,750	3,750	14,750	3,750	3,750	3,750	3,750	3,750	14,750	67,000
160 EXPENSE-Core Services	2,000	2,000	2,000	2,000	2,000	2,000	2,000	2,000	2,000	2,000	2,000	2,000	24,000
200 EXPENSE-LEAP	100	100	100	100	100	100	100	100	100	100	100	100	1,200
210 EXPENSE-OAP	0	0	0	0	0	0	0	0	0	0	0	0	24
Expense	12,631	12,131	12,131	12,131	12,130	23,130	12,130	12,130	12,130	12,130	12,130	22,654	167,588
Income	336	336	336	2,051	2,177	-3,053	-724	-1,724	-1,724	-1,724	-1,724	-3,227	-8,661
	336	336	336	2,051	2,177	-3,053	-724	-1,724	-1,724	-1,724	-1,724	-3,227	-8,661

RESOLUTION NO. 2022-07

A RESOLUTION OF THE BOARD OF COUNTY COMMISSIONERS OF SAN JUAN COUNTY, COLORADO, SUPPORTING THE SILVERTON SINGLETRACK SOCIETY'S GRANT APPLICATION FOR A COMMUNITY IMPACT PROGRAM GRANT FROM THE STATE BOARD OF THE GREAT OUTDOORS COLORADO TRUST FUND AND FOR THE COMPLETION OF THE BAKER'S PARK TRAIL SYSTEM

WHEREAS, the Board of Commissioners of San Juan County Colorado supports the Great Outdoors Colorado grant application for the Baker's Park Trail System; and

WHEREAS, if the requested grant is awarded, San Juan County supports the completion of the project; and

WHEREAS, San Juan County, on behalf of Silverton Singletrack Society, has requested \$900,000 from Great Outdoors Colorado for construction of the Baker's Park Trail System.

NOW, THEREFORE, BE IT HEREBY RESOLVED BY THE BOARD OF COMMISSIONERS OF SAN JUAN COUNTY COLORADO THAT:

- Section 1: The Board of Commissioners of San Juan County Colorado strongly supports Silverton Singletrack Society's application for a grant with Great Outdoors Colorado.
- Section 2: If the grant is awarded, the Board of Commissioners of San Juan County Colorado strongly supports the fulfillment of the project.
- Section 3: If the grant is awarded, the Board of Commissioners of San Juan County Colorado hereby authorizes the County Administrator to sign the grant agreement with Great Outdoors Colorado.
- Section 4: If the grant is awarded, the Board of Commissioners of San Juan County Colorado authorizes the expenditure of funds necessary to meet the terms and obligations of the grant agreement.
- Section 5: This resolution to be in full force and effect from and after its passage and approval.

APPROVED AND ADOPTED IN SILVERTON, SAN JUAN COUNTY, COLORADO THIS 14th day of SEPTEMBER 2022

Scott L. Fetchenhier, Chairman

ATTEST:

Ernest Kuhlman

Ladonna Jaramillo
Clerk and Recorder

Austin Lashley



Willy Tookey <admin@sanjuancolorado.us>

South Mineral resurfacing PSA

2 messages

Merkel, Pete- FS <Peter.Merkel@usda.gov> Thu, Sep 8, 2022 at 3:47 PM
 To: "Owen, Scott -FS" <scott.owen@usda.gov>, "Garrou, Kathryn -FS" <kathryn.garrou@usda.gov>, "Bristow, Kim -FS, Pagosa Springs, CO" <pamela.bristow@usda.gov>
 Cc: "Jones, Cody -FS" <cody.j.jones@usda.gov>, Willy Tookey <admin@sanjuancolorado.us>, "Jordan, Daniel -FS" <daniel.jordan@usda.gov>, "Sparks, Stanley -FS" <stanley.sparks@usda.gov>

We have issued a notice to proceed for the South Mineral gravel job (NFSR 585). It was awarded to Medved Global Inc. for \$550K in GAOA money for 3.74 of the 4.4 miles (10,857 tons of material on a reconditioned roadbed) up to the campground. We have an optional bid item for the remaining 0.66 miles if we can get the funding. Contractor is expected to start on Monday the 12th with a 30 day performance period, the road will remain open but visitors should expect delays of up to 15 minutes and should be cognizant of heavy equipment along the route.

For more information contact Pete Merkel SJNF Roads Manager at 970 385-1323

Apologize for the short notice...



Pete Merkel
Roads Manager

Forest Service

San Juan National Forest

p: 970-385-1323
pete.merkel@usda.gov

15 Burnett Court
 Durango, CO 81301
www.fs.fed.us



Caring for the land and serving people

This electronic message contains information generated by the USDA solely for the intended recipients. Any unauthorized



Willy Tookey <admin@sanjuancolorado.us>

South Mineral resurfacing

3 messages

Merkel, Pete- FS <Peter.Merkel@usda.gov>

Thu, Sep 8, 2022 at 1:57 PM

To: Willy Tookey <admin@sanjuancolorado.us>, "Jordan, Daniel -FS" <daniel.jordan@usda.gov>, "Jones, Cody -FS" <cody.j.jones@usda.gov>, "McCaw, Allen- FS" <Jerry.Mccaw@usda.gov>, "Sparks, Stanley -FS" <stanley.sparks@usda.gov>

Hello interested parties, the South Mineral project is set to start on Monday with a 30 day performance period. They will spend the first week reconditioning the road in preparation for the gravel and then start hauling. They are not camping but will be staying in Silverton. They have approval to draft water out of the river if needed and will be using signage to warn visitors unless the traffic becomes so unbearable that we would need flaggers. We will identify turnaround sites for the trucks on Monday, they are only working weekdays. I'll keep you updated unless you want off the email list.



Pete Merkel
Roads Manager

Forest Service

San Juan National Forest

p: 970-385-1323

pete.merkel@usda.gov

15 Burnett Court

Durango, CO 81301

www.fs.fed.us



Caring for the land and serving people

This electronic message contains information generated by the USDA solely for the intended recipients. Any unauthorized interception of this message or the use or disclosure of the information it contains may violate the law and subject the violator to civil or criminal penalties. If you believe you have received this message in error, please notify the sender and delete the email immediately.

Willy Tookey <admin@sanjuancolorado.us>

Thu, Sep 8, 2022 at 3:10 PM

To: "Merkel, Pete- FS" <Peter.Merkel@usda.gov>

Hi Pete,



Willy Tookey <admin@sanjuancolorado.us>

Notice of Responsive comment period for Stormwater Discharges Associated with Active and Inactive Industrial Activity COR040000

Stucky - CDPHE, Andrea <andrea.stucky@state.co.us>

Tue, Sep 6, 2022 at 3:57 PM

To: Jennifer Thurston <jennifer@informcolorado.org>, jason.willis@tu.org, cmchale@nma.org, mhamarat@fmi.com, Stan Dempsey <stan@coloradomining.org>, jcb@vrlaw.com, cjohnson@tristate.org, bbosshardt@clearcreekcounty.us, ManagerAdmin@summitcountyco.gov, Jeffrey.Huntley@summitcountyco.gov, AMitchell@parkco.us, lcaselli@ouraycountyco.gov, chunt@ouraycountyco.gov, aedwards@silverton.co.us, admin@sanjuancolorado.us, Poppy Staub <pstaub@ouraysilvermines.com>, sdwd3764@gmail.com, tkctew@yahoo.com, Sarah Baciak <sbaciak@gilpincounty.org>, Brad Benning <bbenning@gilpincounty.org>, shollingsworth@gilpincounty.org, TEisenman@parkco.us

Notice of Responsive comment period for Stormwater Discharges Associated with Active and Inactive Industrial Activity COR040000

Members of the public can view and respond to all the comments received about the proposed draft permit. The responsive comment period will be open from Tuesday, September 6 through Thursday, October 6, 2022. The rebuttal comment period will be open from Thursday, October 13 to Monday, October 24, 2022.

1. Review comments. Review all comments received in the permit file [HERE](#)
2. Respond to comments. Use this [form](#) for the RESPONSIVE comment period. Use this [form](#) for the REBUTTAL comment period.
3. Email your comments and any additional documents or files related to your comments to cdphe.wqrecordscenter@state.co.us

Andrea Stucky

Work Group Lead

Industrial and Natural Resource Extraction Permitting Unit
(she/her)



COLORADO
Water Quality Control Division
Department of Public Health & Environment

Remote: 720.235.8527

4300 Cherry Creek Drive South, Denver, CO 80246

andrea.stucky@state.co.us | www.colorado.gov/cdphe/wqcd



CDPS Permit Public Comment Form

Please use this form to submit comments to the division on draft CDPS permit actions.

You will need to download a copy of this form

- Go to File - Make a Copy to fill it out as a Google Doc.
- Go to File - Download - Word Document to fill it out as a Microsoft Word document.

Permit Number:

Comment Author/Permittee (if you are commenting on behalf of someone)

Email Address

Please put your comments for each part of the permit on a new line. If this is a modification, please limit your comments to the scope of the modification. Once you have completed your comments please email to the permit writer with any supporting documentation.

Document (Permit, Fact Sheet, or WQA)	Part of the document. (For example, Permit Part I.E.a.VI)	Comment	Request: Specific change you are asking for
DRAFT Colorado Discharge Permit System (CDPS) Fact Sheet to Permit Number COR040000	N/A	Trout Unlimited's Abandoned Mine Lands Team has questions about the scope, applicability, and relevance of this permit in relation to inactive mines and abandoned mine reclamation across the State of Colorado. We were notified of this permit on August 31 st , 2022, without appropriate time to read through the draft permit, engage in the public comment process or ask questions around permit specifics. As a long-standing partner to CDPHE, and a leader in abandoned mine reclamation, Trout Unlimited would appreciate the opportunity to engage in discussion around this permit.	Trout Unlimited respectfully requests an extension of the comment period so that our organization may engage in the stakeholder process and gain further clarification regarding this permit.



CDPS Permit Public Comment Form

Please use this form to submit comments to the division on CDPS permits.

Permit Number:

COR040000

Date

August 31, 2022

Comment Author/Permittee (if you are commenting on behalf of someone)

Anthony D. Edwards on behalf of San Juan County, Colorado

Email Address

aedwards@silverton.co.us

Please put your comments for each part of the permit on a new line. If this is a modification, please limit your comments to the scope of the modification. Once you have completed your comments please email to the permit writer with any supporting documentation.

Document (Permit, Fact Sheet, or WQA)	Part of the document. (For example, Permit Part I.E.a.VI)	Comment	Request: Specific change you are asking for
COR040000	GENERAL	San Juan County is concerned with the unintended consequences in the form of economic impacts associated with permit compliance for counties and businesses located in the historic mineral belt. See Legislative's Declaration under the State Administrative Procedure Act ("APA"), C.R.S. § 24-4-101.5. "[I]t is the continuing responsibility of agencies to analyze the economic impact of agency actions and reevaluate the economic impact of continuing agency actions to determine whether the actions promote the public interest." Id. San Juan County encourages the	San Juan County requests the agency conduct a cost benefit analysis on the impacts this proposed rule will have on Colorado Counties and Municipalities. In addition, San Juan County requests the agency address and provide clarification on those matters presented in the comment and

		<p>agency to invest in an analysis as to how the proposed action will impact Colorado Counties and Municipalities located in the Colorado Mineral Belt as well as work with and support those requesting to conduct a cost-benefit analysis as contemplated under C.R.S. § 25-8-503.5. It is in the public interest to determine how the action will impact the counties and municipalities in the Colorado Mineral Belt, and in doing so the State should consider the impact on residential, commercial and industrial development in rural communities.</p> <p>In addition, it is unclear how the permitting measuring scheme distinguishes natural loading from anthropogenic activity. The Colorado Mineral Belt includes varied geologic and hydrologic formations, diverse minerals, and innumerable variations in geochemistry associated with hydrothermally altered and in some areas historically volcanic terrain.</p> <p>As it relates to administering and enforcing the permitting rules, the agency needs to clarify how it intends to discern between mining site runoff which is equivalent to the surrounding natural environment from those sites where altered impacts can be directly attributed to mining activity. Within the Colorado landscape, the content of water samples often consists of naturally occurring substances in unaltered form or altered solely through naturally occurring processes or phenomena, from a location where naturally found.</p>	<p>reissue the proposed rule for comment after clarification in the proposal is drafted.</p>
COR040000	Part I A.1. (Page 4)	Does an inactive facility engaged in metal mining include abandoned patented and unpatented mining claims?	Provide clarification as to what properties will be classified as an "inactive facility".
COR040000	Part I A.1.b.viii. (Page 4)	The statement "areas where industrial activity has taken place in the past and significant materials remain and are	

COR040000		<p>exposed to stormwater". Is significant materials defined as: <i>Includes, but is not limited to raw materials; fuels; materials such as solvents, detergents, and plastic pellets; finished materials such as metallic products; raw materials used in food processing or production; hazardous substances designated under Section 101(14) of CERCLA as amended by SARA (1986); any chemical the facility is required to report pursuant to Section 313 of Title III of SARA (1986); fertilizers; pesticides; and waste products such as ashes, slag and sludge that have the potential to be released with stormwater discharges. 5 CCR 1002-61.</i></p>	
COR040000	<p>Part I A.2 (Page 5)</p>	<p>How do you define a "stormwater outfall" in context of a mining facility? How do you define an indirect discharge to surface water.</p>	<p>Provide clarity for these terms.</p>
COR040000	<p>Part I A.8.b.ii. (Page 8)</p>	<p>If the permit applies to historic, legacy mines the nature of the material and actual reclamation efforts may cause more harm than good. For example, there are cultural and historical concerns to consider. Have or will SHPO and local Historical Societies be consulted?</p>	<p>The agency should consider how the rule will impact historic sites and incorporate engagement with local historical societies and SHPO to determine the proper approach to preserve places with historical significance.</p>
COR040000	<p>Part I C. (Page 9)</p>	<p>Monitoring of facilities, particularly inactive, at the prescribed frequencies will be impossible in many cases, given their remoteness. Does this apply to Inactive sites? It does not appear there is a clear distinction between active and inactive sites. Continuous monitoring of flow may be physically and financially impossible.</p>	<p>Provide clarity on the issues presented.</p>

COR040000	H.1.a. (page 42)	Certain sites are simply inaccessible for more than half the year due to snow fall.	Provide clarity on how this issue will be addressed.
COR040000	K.4.	What facilities will be required to have flow measuring devices?	Provide clarity on how this issue will be addressed.
COR040000	K.6.d.iii.	Accessing remote sites can take significantly longer than 30 minutes.	Provide clarity on how this issue will be addressed.
COR040000	Part III 18. (Page 71)	Define a mining site.	Define "mining site".
COR040000	Part III XI.E.2.	(Pages 44-46) If historic inactive mines all are ultimately eliminated, what is the impact on tourism? Page 45-46 2b. Attainment of water quality standards may not be feasible for these mines given their location (remoteness), the cost which would greatly exceed the existing cost of managing the site. The statement "and significant adverse effect upon the project's profitability or competitive position" implies that there is actually a commercial endeavor. Page 46 2.c. "cannot be remedied or would cause more environmental damage to correct to leave in place." Many of these sites, given their location are isolated and the remedy likely will cause more damage than good.	Please provide clarification as to how the agency intends to address these concerns.
COR040000	Part III XI.E.5. (Page 46)	In considering the significant changes to this permit, the potential impact it could have on counties and municipalities in the Mineral Belt, the proposal requires a Responsive Public Comment Period.	Provide a Responsive Public Comment Period.
COR040000	Part III Appendix B-18 (Page 71)	18. "Inactive mining operations" – Regulation 61.3(2)(e)(iii)(C) identifies that "inactive mining operations" are mining sites that are not being actively	Provide clarification on the questions presented in the comment.

		<p>mined, but which have an identifiable owner/operator; inactive mining sites do not include sites where mining claims are being maintained prior to disturbances associated with the extraction, beneficiation, or processing of mined materials, nor sites where minimal activities are undertaken for the sole purpose of maintaining a mining claim.</p> <p>In regards to owner/operator, how does the permit process reconcile mixed ownership sites? For example, some sites have overlapping claims with separate owners. Owners can include federal land management agencies, multiple LLCs and multiple local and foreign citizens. Mixed ownership can include mineral rights separated from surface rights. In regards to the "owner/operator" term, does this include the federal land management agencies and counties? As it relates to the mineral belt counties in the State of Colorado, this could result in unintended consequences. Many residential developments and non-industrial businesses are located on mining claims. In addition, if the cost burden for undeveloped lands results in private owners relinquishing their property to counties because the land becomes a liability, such action will negatively impact the property tax base for counties governments. Furthermore, it would appear if counties are in the possession of abandoned land they are responsible for permitting those lands. If not, will the State of Colorado be responsible for the costs of permitting and monitoring those facilities? In addition, 86% of San Juan County is federally owned. Will those lands where abandoned mines are located be subject to the permitting requirements? If so, who will be financially responsible for permit compliance and how will the permit distinguish between mixed ownership?</p>	
--	--	---	--

COR040000	Part III Appx. B, 18 (pg. 71):	<p>'inactive mining operations' are defined as mining sites . . .</p> <p>” What is the definition of a “mining site”?</p> <ul style="list-style-type: none"> How does the agency interpret “/” in the owner/operator term? As it relates to “inactive mining operations” it is unclear which historic, legacy mining sites qualify as inactive mining operations and are subject to the proposed permit requirements. Colorado has over 20,000 mining sites. San Juan County suggests historic, legacy mining sites subject to the CWA, CWQCA, and applicable regulations be exempt from being categorized as “inactive mining operations”. 	Provide clarification to the questions presented and consider the request for exemption.
COR040000	Part III, Appendix B-18 (Page 75)	<p>The conclusion of the definitions reads “Additional relevant definitions are found in the Colorado Water Quality Control Act, CRS §§ 25-8-101 et seq., the Colorado Discharge Permit System Regulations, Regulation 61 (5 CCR 1002-61) and other applicable regulations.”</p> <p>The vagueness of the catchall phrase “...other applicable regulations.” and the failure to define other important terms (e.g. “owner/operator”, “mining site”, “stormwater outfall”) with specificity does not provide the clarity necessary to properly notify the public on how the proposed rule will impact property and communities.</p>	Provide definitions for the terms identified and clarification on what regulations the public should take into consideration as it relates to determining definitions as directed in the statement “...and other applicable regulations.”
COR040000	GENERAL	San Juan County invites and requests the agency drafting participants to meet with the San Juan County Commissioners and Staff to go on a field trip to discuss the proposed rule and identify how to address the concerns presented in this comment.	Contact San Juan County and set a time to meet.



LYNN PADGETT
JAKE NIECE
BEN TISDEL

BOARD OF COUNTY COMMISSIONERS

541 4th Street • P.O. Box C • Ouray, Colorado 81427 • 970-325-7320 • FAX: 970-325-0452

AUGUST 31, 2022

TO: Colorado Department of Public Health and Environment
Water Quality Control Division (WQCD)
4300 Cherry Creek Drive South, Denver, CO 80246
Sent via email to Kathleen.Rosow@state.co.us and Andrea.Stucky@state.co.us

RE: Public Notice No. CO-07-2022, dated 07/01/2022

Dear CDPHE, WQCD-P-B2:

Ouray County is submitting these written comments to the Division on the draft permit and fact sheet during the term of the public comment period. We are identifying the following issues in our comments on the draft permit, so that we may be allowed to raise those issues in an administrative adjudication:

In the context of this permit, it is unclear what an "Inactive Facility Engaged in Metal Mining" means.

We incorporate herein all issues and statements raised by San Juan County in its comment letter on this matter dated August 30, 2022, attached to this letter as Attachment A.

Ouray County would like to analyze and offer evidence pursuant to Regulation 61.11(b) as to whether the water quality standard-based effluent limitations of this permit are reasonably related to the economic, environmental, public health and energy impacts to the Ouray County public and affected persons and are in furtherance of the policies set forth in Sections 25-8-102 and -104; however, due to the imperfect public notice and scoping efforts surrounding the draft permit, we have no time to undertake such a meaningful effort.

Further, Ouray County is also requesting an extension of the comment period. For efficiency, this is not a stand-alone request via email or letter to the permit writer during the duration of the public comment period, but is instead incorporated into the body of this comment letter. The specific reasons why the extension is needed include the significant faults in the public notice and scoping for this draft permit rule. Specifically, the notices of the general permit sent to current COR040000 permittees, renewal announced in the permits webinar, and notice of the general permit to current permittees and interested parties, were truly only "notices" of renewal. There was no mention of the new terms and conditions that could be included in the metal mining stormwater general permit. The Division typically engages in a series of stakeholder meetings in advance of renewing a general permit, including prior to determining what terms and conditions might be applied in the draft permit renewal.

Ouray County believes that additional meeting and outreach to potential permittees and the public about the draft terms and conditions, prior to the public notice, would have allowed for permittees to gain a better understanding of the proposed terms and conditions in the renewal permit. Ouray County also notes that there were likely entities that were not made aware of this general permit, given that it appears to expand on the scope of the current COR040000 permit, and were not outreached to the broader community of mining claim owners or the communities that rely on their non-mining and inactive uses.

In addition, Ouray County is also requesting a 10-day responsive period for public comment in which Ouray County and other commenters that have requested a responsive comment period may file a written response to the material filed by any other person during the comment period.

Finally, Ouray County requests a public meeting on the terms of the draft permit in accordance with 61.5(3), to be held in Ouray County. Because of the volume of historic, active, and inactive mining claims located within Ouray County, the Ouray County Board of County Commissioners believes that there is a significant amount of public interest regarding the draft. Specifically, many inactive and historic mining sites are held for conservation and recreation purposes, and the Board has determined that there is a significant risk of damage to the conservation and recreation purposes. Further, the Board of County Commissioners for Ouray County believes that the future of active and potentially future active metal mining operations is an integral component of the County's economy as well as a significant component of the future of renewable energy production, and believes that the proposed permit may compromise the economic viability and effectively regulate out of existence most or all current and future mining operations. Ouray County would welcome the opportunity to host such a meeting at one of our county facilities, and our staff can certainly coordinate further with your agency in conjunction with this request. Thank you.

Sincerely,

Lynn Padgett, Chair

Jake Niece, Vice Chair

Ben Tisdell, Commissioner



Clear Creek County

POST OFFICE BOX 2000
GEORGETOWN, COLORADO 80444

TELEPHONE: (303) 679-2300

AUGUST 31, 2022

TO: Colorado Department of Public Health and Environment
Water Quality Control Division (WQCD)
4300 Cherry Creek Drive South, Denver, CO 80246
Sent via email to Kathleen.Rosow@state.co.us and Andrea.Stucky@state.co.us

RE: Public Notice No. CO-07-2022, dated 07/01/2022 / Comments by Clear Creek County

Dear CDPHE, WQCD-P-B2:

Clear Creek County is submitting these written comments to the Division on the draft permit and fact sheet during the term of the public comment period. We are identifying the following issues in our comments on the draft permit so that we may be allowed to raise those issues in an administrative adjudication:

In the context of this permit, it is unclear what an "Inactive Facility Engaged in Metal Mining" means. Careful definition of that term is important because the primary mode of private property acquisition in the unincorporated areas of mineral counties has been via mining claim. Additionally, many of the properties within our small municipalities contain mine or mill waste and have a history of mining activity. Counties own a large number of these properties due to nonpayment of property taxes over the more-than-a-century time frame that they have been private. We have neither the funding nor the expertise to comply with this proposed rule if these properties are indeed implicated. Compliance would require a reduction in crucial services to our constituents. Because many of these properties are now owned and used for residential purposes, this rule could also place requirements on homeowners that do not have the resources to comply. We fear a direct impact to their quality of life and to the value of their properties if this rule is implemented as broadly as it appears at first glance.

We incorporate herein all issues and statements raised by San Juan County in its comment letter.

Clear Creek County would like to analyze and offer evidence pursuant to Regulation 61.11(b) as to whether the water quality standard-based effluent limitations of this permit are reasonably related to the economic, environmental, public health and energy impacts to the Clear Creek County public and affected persons and are in furtherance of the policies set forth in Sections 25-8-102 and -104; however, due to the imperfect public notice and scoping efforts surrounding the draft permit, we have no time to undertake such a meaningful effort.

Therefore, Clear Creek is also requesting an extension of the comment period. For efficiency, this is not a stand-alone request via email or letter to the permit writer during the duration of the public comment period, but is instead incorporated into the body of this comment letter. The specific reasons why the extension is needed include the significant faults in the public notice and scoping for this draft permit rule. Counties and municipalities are clearly important stakeholders in this process. As such, we believe that we should have been included in the initial notification of the draft rule and given a sufficient

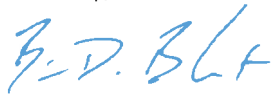
timeframe to respond thoroughly. The Division typically engages in a series of stakeholder meetings prior to renewing a general permit, including prior to determining what terms and conditions might be applied in the draft permit renewal.

Clear Creek County believes that additional meeting and outreach to potential permittees and the public about the draft terms and conditions, prior to the public notice, would have allowed for permittees to gain a better understanding of the proposed terms and conditions in the renewal permit. Clear Creek County notes the likelihood that additional impacted entities were not made aware of this general permit, given that it appears to expand on the scope of the current COR040000 permit. We ask that this be remedied by holding public meetings and expanding the reach of your notifications to include all potentially affected property owners.

Clear Creek County is also requesting a 10-day responsive period for public comment in which Clear Creek County and other commenters that have requested a responsive comment period may file a written response to the material filed by any other person during the comment period.

Clear Creek County believes that the proposed permit may compromise our economic viability, ability to provide statutorily required services to our constituents and effectively regulate out of existence most or all current and future mining operations, and other non-mining economic, residential and public purpose activities on these sites. Given the scope and scale of the potential impacts, we ask you to correct course as requested above.

Sincerely,



Brian D. Bosshardt
County Manager

P.O. Box 1373
Fairplay, CO 80440
(719) 836-4201 (Fairplay)
(719) 836-3273 (Fax)
Website: www.parkco.us

COUNTY OF PARK
Board of County
Commissioners



August 31, 2022

TO: Colorado Department of Public Health and Environment
Water Quality Control Division (WQCD)
4300 Cherry Creek Drive South, Denver, CO 80246
Sent via email to Kathleen.Rosow@state.co.us and Andrea.Stucky@state.co.us

RE: Public Notice No. CO-07-2022, dated 07/01/2022

Dear CDPHE, WQCD-P-B2:

Park County is submitting these written comments to the Division on the draft permit and fact sheet during the term of the public comment period. We are identifying the following issues in our comments on the draft permit, so that we may be allowed to raise those issues in an administrative adjudication:

In the context of this permit, it is unclear what an "Inactive Facility Engaged in Metal Mining" means.

Park County would like to analyze and offer evidence pursuant to Regulation 61.11(b) as to whether the water quality standard-based effluent limitations of this permit are reasonably related to the economic, environmental, public health and energy impacts to the Park County public and affected persons and are in furtherance of the policies set forth in Sections 25-8-102 and -104; however, due to the imperfect public notice and scoping efforts surrounding the draft permit, we have no time to undertake such a meaningful effort.

Park County is also requesting an extension of the comment period. For efficiency, this is not a stand-alone request via email or letter to the permit writer during the duration of the public comment period, but is instead incorporated into the body of this comment letter. The specific reasons why the extension is needed include the significant faults in the public notice and scoping for this draft permit rule. Specifically, the notices of the general permit sent to current COR040000 permittees, renewal announced in the permits webinar, and notice of the general permit to current permittees and interested parties, were truly only "notices" of renewal. There was no mention of the new terms and conditions that could be included in the metal mining storm water general permit. The Division typically engages in a series of stakeholder meetings in advance of renewing a general permit, including prior to determining what terms and conditions might be applied in the draft permit renewal.

Park County believes that additional meeting and outreach to potential permittees and the public about the draft terms and conditions, prior to the public notice, would have allowed for permittees to gain a better understanding of the proposed terms and conditions in the renewal permit. Park County also notes that there were likely entities that were not made aware of this general permit, given that it appears to expand on the scope of the current COR040000 permit,

and were not outreached to the broader community of mining claim owners or the communities that rely on their non-mining and inactive uses.

In addition, Park County is also requesting a 10-day responsive period for public comment in which Park County and other commenters that have requested a responsive comment period may file a written response to the material filed by any other person during the comment period.

Finally, Park County requests a public meeting on the terms of the draft permit in accordance with 61.5(3), to be held in Park County. Because of the volume of historic, active, and inactive mining claims located within Park County, the Park County Board of County Commissioners believes that there is a significant amount of public interest regarding the draft. Specifically, many inactive and historic mining sites are held for conservation and recreation purposes, and the Board has determined that there is a significant risk of damage to the conservation and recreation purposes. Further, the Board of County Commissioners for Park County believes that the future of active and potentially future active metal mining operations is an integral component of the County's economy as well as a significant component of the future of renewable energy production, and believes that the proposed permit may compromise the economic viability and effectively regulate out of existence most or all current and future mining operations. Park County would welcome the opportunity to host such a meeting at one of our county facilities, and our staff can certainly coordinate further with your agency in conjunction with this request. Thank you.

Respectfully,



Thomas R. Eisenman
County Manager for the
Board of County Commissioners

STATE OF
COLORADO

Stucky - CDPHE, Andrea <andrea.stucky@state.co.us>

Comments to CDPS General Permit COR040000 For Stormwater Discharges Associated with Active and Inactive Metal Mining Industrial Activity

1 message

Sarah Baciak <sbaciak@gilpincounty.org>

Thu, Sep 1, 2022 at 4:56 PM

To: "Kathleen.Rosow@state.co.us" <Kathleen.Rosow@state.co.us>, "Andrea.Stucky@state.co.us"

<Andrea.Stucky@state.co.us>

Cc: Brad Benning <bbenning@gilpincounty.org>, Sandy Hollingsworth <shollingsworth@gilpincounty.org>

Dear Ms. Rosow & Ms. Stucky:

Gilpin County has briefly reviewed the draft renewal permit and fact sheet from Colorado Discharge Permit System ("CDPS") Permit No. COR040000, General Permit for Stormwater Discharges from Active and Inactive Metal Mining Operations ("draft permit"). Gilpin County appreciates the opportunity to make comments relative to the captioned matter, and we understand we are providing that comment late, but hope that you will consider our comments all the same. Gilpin County's comments on the draft permit are as follows:

1. All but one of the comments request additional time to comment and ask CDPHE and WQCD to involve the stakeholders and engage in stakeholder meetings to work through all of issues. Those asking for this include the USFS and USDA. CDPHE has previously engaged stakeholders on other matters so not doing so now is a departure from established practice.
2. One of the big concerns for counties and (and cities) include the impact the ambiguous permit rules would have on innocent property owners that acquired properties that previously were mining properties but are not being used for mining now. The language arguable would include these property owners in the persons/entities required to comply with the onerous and costly general stormwater permit compliance, monitoring and reporting.
3. This same concern for property owners applies to the counties and cities too because we many times automatically acquire property from property owners through tax liens. Acquiring mining claim property with onerous stormwater regulations could result in considerable burden and expense on counties. Cities may have similar issues.
4. Applying the requirements to prior mining properties that are not mining will sterilize these properties as it will discourage purchase and use of these properties for development other than for mining. These properties will then become unwanted and taxes won't be paid decreasing property taxes to counties. These unwanted properties will then become the counties problem through automatic acquisition of tax liens for unpaid taxes. With that will come the liabilities of compliance with the WCQD General Permit COR040000 requirements becoming the counties problem and responsibility for compliance.
5. It is unclear how WCQD General Permil COR040000 will impact historic properties including historic mining properties. This should be thoroughly analyzed and consultation should be done with the SHPO, History Colorado, and the federal Advisory Council on Historic Preservation.

6. Many mining claim properties have multiple owners with different land, mineral, mining right in the property and overlapping claims which present potential problems.

7. Additionally, the requirements appear to be substantially different than requirements of the EPA also intended to address water pollution and degradation including stormwater. These different state and federal requirements make compliance difficult if not impossible with both.

8. Many terms and concepts used in WCQD General Permit COR040000 are ambiguous and need further clarification.

9. Gilpin County adopts all of the comments submitted by Ouray, Summit County, San Juan County, National Mining Association, USDA, USFS, and Climax Molybdenum Mine.

As always, Gilpin County supports ensuring the protection of our streams, rivers, groundwater and all sources of water and in addressing pollution. WCQD General Permit COR040000 may help do that but it does so without adequate scoping, shareholder engagement, and outreach and notice to the public and shareholders. Additionally the CDPHE and WCQD has not adequately considered the impacts on the counties, cities, businesses, and other entities and individuals these revisions could have. We request, like many other Colorado counties, that you extend the comment period and provide more information and engagement to the many stakeholders impacted by the draft permit.

This email is being submitted on behalf of the Gilpin County Attorney who is also copied hereto.

Thank you,



Sarah Baciak | Paralegal
Gilpin County Attorney's Office
203 Eureka Street
Central City, CO 80427
D: 303-515-4378
O: 303-582-5214 Ext: 2540

This email and any files transmitted with it are confidential and intended solely for the use of the individual or entity to whom they are addressed. If you have received this email in error please notify the Gilpin County. Please note that any views or opinions presented in this email are solely those of the author and do not necessarily represent those of Gilpin County. Finally, the recipient should check this email and any attachments for the presence of viruses. Gilpin County accepts no liability for any damage caused by any virus transmitted by this email.

Fund Status Report

San Juan County

Report Selection Criteria:

Selected Fund Type: ALL
 Include Encumbrances? NO
 Include Pri Yr Liabilities? NO
 Printed in Alpha by Fund Name? NO

Fiscal Year: 2022
 From Period: 8
 To Period: 8

From Date: 8/1/2022
 Thru Date: 8/31/2022
 Option: Period

Selected Funds :

General Fund (01)	Beginning Balance	Receipts	Disbursements	Transfers	Ending Balance
010 - COUNTY GENERAL FUND	\$424,458.73	\$431,967.76	(\$410,461.21)	\$0.00	\$445,965.28
020 - COUNTY ROAD & BRIDGE	\$409,901.39	\$45,834.48	(\$23,819.60)	\$0.00	\$431,916.27
030 - CONTINGENT FUND	\$54,554.94	\$0.00	\$0.00	\$0.00	\$54,554.94
035 - AMENDMENT 1-EMERGENCY FUN	\$30,000.00	\$0.00	\$0.00	\$0.00	\$30,000.00
040 - SOCIAL SERVICE FUND	\$80,848.72	\$8,633.56	(\$16,140.97)	\$0.00	\$73,341.31
045 - AFFORDABLE HOUSING FUND	\$374,021.70	\$12,508.18	\$0.00	\$0.00	\$386,529.88
050 - CONSERVATION TRUST	\$1,226.37	\$10.46	\$0.00	\$0.00	\$1,236.83
051 - LODGING TAX FUND	\$386,338.22	\$28,834.79	(\$20,000.00)	\$0.00	\$395,173.01
052 - TOURISM BOARD FUND	\$3,578.43	\$0.15	(\$8,680.84)	\$0.00	(\$5,102.26)
055 - NOXIOUS WEED FUND	\$1,988.18	\$0.00	\$0.00	\$0.00	\$1,988.18
060 - TOWN OF SILVERTON	\$9,063.87	\$24,478.03	(\$24,305.14)	\$0.00	\$9,236.76
070 - DURANGO FIRE PROTECTION DIS	(\$2,382.83)	\$1,851.24	(\$1,851.24)	\$0.00	\$59.60
080 - SOUTHWEST WATER CONSERVAT	\$59.60	\$1,368.02	(\$1,368.02)	\$0.00	\$10,178.40
090 - ADVERTISING FEES	\$10,178.40	\$0.00	\$0.00	\$0.00	\$10,178.40
100 - REDEMPTION	\$312.30	\$1,288.76	(\$1,288.76)	\$0.00	\$312.30
110 - SCHOOL GENERAL	(\$8,203.11)	\$42,916.69	(\$42,916.69)	\$0.00	(\$8,203.11)
116 - SCHOOL BOND	\$0.00	\$5,041.91	(\$5,041.91)	\$0.00	\$0.00
200 - SPECIAL ASSESSMENTS	\$0.00	\$0.00	\$0.00	\$0.00	\$0.00
210 - 911 AUTHORITY	\$52,039.31	\$3,421.27	(\$2,418.44)	\$0.00	\$53,042.14
220 - TREASURER'S FEES	\$18,008.05	\$30.00	\$0.00	\$0.00	\$18,038.05
230 - ASSESSOR'S PENALTY	\$5,548.41	\$0.00	\$0.00	\$0.00	\$5,548.41
240 - TREASURER'S DEEDS/FORECLOS	\$11,861.03	\$215.00	(\$439.32)	\$0.00	\$11,636.71
250 - CLERK TECHNOLOGY FEES	\$4,619.40	\$37.00	\$0.00	\$0.00	\$4,656.40
260 - ADMIN FEE	\$2,698.42	\$0.00	\$0.00	\$0.00	\$2,698.42
270 - PEAK INVESTMENTS	\$33,056.36	(\$185.84)	\$0.00	\$0.00	\$32,870.52
280 - ABATEMENTS	(\$2,333.91)	\$0.00	\$0.00	\$0.00	(\$2,333.91)
300 - ESCROW-AMBULANCE	\$72,400.14	\$27.93	\$0.00	\$0.00	\$72,428.07

Fund Status Report

San Juan County

Report Selection Criteria:

Selected Fund Type: ALL
 Include Encumbrances? NO
 Include Pri Yr Liabilities? NO
 Printed in Alpha by Fund Name? NO

Fiscal Year: 2022
 From Period: 8
 To Period: 8

From Date: 8/1/2022
 Thru Date: 8/31/2022
 Option: Period

Selected Funds :

	Beginning Balance	Receipts	Disbursements	Transfers	Ending Balance
350 - ESCROW-COMPUTER EQUIP	\$4,107.72	\$5.61	\$0.00	\$0.00	\$4,113.33
360 - ASSESSOR/TREASURER ESCROW	\$3,182.73	\$7.91	\$0.00	\$0.00	\$3,190.64
400 - ESCROW-GRAVEL	\$144,566.26	\$12.63	\$0.00	\$0.00	\$144,578.89
410 - COUNTY BARN ESCROW	\$45,784.41	\$58.54	\$0.00	\$0.00	\$45,842.95
420 - ROAD EQUIP PURCHASE ESCROW	\$28,335.29	\$62.62	\$0.00	\$0.00	\$28,397.91
430 - LOST 4-WHEELERS ESCROW	\$3,911.41	\$4.21	\$0.00	\$0.00	\$3,915.62
440 - SEARCH & RESCUE ESCROW	\$10,000.00	\$0.00	\$0.00	\$0.00	\$10,000.00
450 - COURTHOUSE ESCROW	\$47,221.24	\$613.66	\$0.00	\$0.00	\$47,834.90
460 - MSI ESCROW	\$70,956.72	\$308.21	\$0.00	\$0.00	\$71,264.93
470 - EMERGENCY PREPAREDNESS	\$2,261.38	\$9.06	\$0.00	\$0.00	\$2,270.44
500 - HISTORICAL ARCHIVES ESCROW	\$358.62	\$2.68	\$0.00	\$0.00	\$361.30
550 - ASPHALT ESCROW	\$81,126.43	\$93.11	\$0.00	\$0.00	\$81,219.54
570 - FOREST RESERVE ESCROW	\$125,648.18	\$0.00	\$0.00	\$0.00	\$125,648.18
590 - EMERGENCY SERVICES SALES TA	\$1,469,146.14	\$119,039.47	\$0.00	\$0.00	\$1,588,185.61
600 - FIRE TRUCK FUND	\$65,938.25	\$80.48	\$0.00	\$0.00	\$66,018.73
650 - LAND USE ESCROW	\$56,580.24	\$35.20	\$0.00	\$0.00	\$56,615.44
700 - WORKFORCE HOUSING ESCROW	\$2,701.97	\$19.51	\$0.00	\$0.00	\$2,721.48
750 - ESCROW-SHERIFF VEHICLE	\$33,618.38	\$9.18	\$0.00	\$0.00	\$33,627.56
800 - PUBLIC TRUSTEE	\$105.00	\$88.00	(\$118.00)	\$0.00	\$75.00
810 - SPECIFIC OWNERSHIP TAX	\$16,897.54	\$14,384.12	(\$16,897.55)	\$0.00	\$14,384.11
820 - TAX HOLDING FUND	\$125,430.44	\$95,232.21	(\$123,264.81)	\$0.00	\$97,397.84
900 - ADVANCED COLLECTIONS	\$1,100.00	\$0.00	\$0.00	\$0.00	\$1,100.00
950 - WEST SIDE SPECIAL IMP. DISTRICT	\$0.00	\$0.00	\$0.00	\$0.00	\$0.00
960 - HOSPITAL GRANT	\$0.00	\$0.00	\$0.00	\$0.00	\$0.00
* Fund Type Total *	\$4,322,820.47	\$838,345.80	(\$699,012.50)	\$0.00	\$4,462,153.77
* Report Total *	\$4,322,820.47	\$838,345.80	(\$699,012.50)	\$0.00	\$4,462,153.77

San Juan County

Composition of Cash Balances and Investments

As Of: 8/31/2022 Including Account Details

	Net Bank Balance	Investments	Cash on Hand/ In Transit	Total
<i>Cash and Cash Items</i>				
Cash on Hand	\$0.00	\$0.00	\$200.00	\$200.00
Cash on Hand:	\$0.00	\$0.00	\$200.00	\$200.00
<i>Demand and Time Deposits</i>				
Citizens State Bank				
Tourism Fund Checking	(\$4,979.87)	\$0.00	\$0.00	(\$4,979.87)
Affordable Housing Checking	\$405,146.31	\$0.00	\$0.00	\$405,146.31
911 Authority Checking	\$53,386.21	\$0.00	\$0.00	\$53,386.21
General Checking	\$1,686,041.60	\$0.00	\$0.00	\$1,686,041.60
Citizens State Bank:	\$2,139,594.25	\$0.00	\$0.00	\$2,139,594.25

Investment Pool

	Net Bank Balance	Investments	Cash on Hand/ In Transit	Total
Citizens State Bank				
100120367	\$0.00	\$1,019,579.00	\$0.00	\$1,019,579.00
Citizens State Bank:	\$0.00	\$1,019,579.00	\$0.00	\$1,019,579.00
COLOTRUST				
CO-01-0646-8001	\$0.00	\$1,008,669.10	\$0.00	\$1,008,669.10
COLOTRUST:	\$0.00	\$1,008,669.10	\$0.00	\$1,008,669.10
Sigma Financial Corporation				
GTR-041850	\$0.00	\$294,111.42	\$0.00	\$294,111.42
Sigma Financial Corporation:	\$0.00	\$294,111.42	\$0.00	\$294,111.42
	<u>\$2,139,594.25</u>	<u>\$2,322,359.52</u>	<u>\$200.00</u>	<u>\$4,462,153.77</u>

2022 SALES TAX

	Town			County			Emergency Services		
	Local	Remote	Total	Local	Remote	Total	Local	Remote	Total
January	39,205.90	9,195.92	48,401.82	11,537.52	7,277.72	18,815.24	31,712.58	10,295.36	42,007.94
February	44,146.95	12,788.01	56,934.96	18,779.24	6,835.25	25,614.49	39,338.81	12,263.74	51,602.55
March	62,963.42	18,727.85	81,691.27	15,168.99	5,753.99	20,922.98	48,829.59	15,300.16	64,129.75
April	53,190.25	7,164.49	60,354.74	21,069.45	5,470.91	26,540.36	46,409.30	7,896.61	54,305.91
May	49,313.23	9,734.40	59,047.63	23,758.13	20,226.35	43,984.48	45,666.63	18,724.25	64,390.88
June	34,642.71	7,026.64	41,669.35	6,924.72	3,221.41	10,146.13	28,575.01	7,612.23	36,187.24
July	63,306.81	7,962.66	71,269.47	15,774.55	5,873.38	21,647.93	49,422.64	8,646.96	58,069.60
August	145,662.10	17,869.99	163,532.09	19,927.27	7,016.18	26,943.45	103,486.63	15,552.84	119,039.47
September	202,938.61	14,542.52	217,481.13	23,792.59	5,981.69	29,774.28	141,697.79	12,826.79	154,524.58
October	-	-	-	-	-	-	-	-	-
November	-	-	-	-	-	-	-	-	-
December	-	-	-	-	-	-	-	-	-
Total	695,369.98	105,012.48	800,382.46	156,732.46	67,656.88	224,389.34	535,138.98	109,118.94	644,257.92

County Sales Tax

	2017	2018	2019	2020	2021	2022	% Change	Syr. Average
January	6,799.02	4,970.71	7,799.87	6,854.79	16,723.50	18,815.24	12.51%	11,032.82
February	15,080.08	13,859.09	12,885.86	22,860.78	19,987.28	25,634.49	28.25%	19,045.50
March	10,000.08	11,861.72	11,246.33	14,595.18	16,402.87	20,922.98	27.56%	15,005.82
April	11,323.27	10,399.61	8,857.05	15,280.29	15,820.09	26,540.36	67.76%	15,379.48
May	13,990.92	16,321.32	19,708.91	12,778.47	24,773.54	43,984.48	77.55%	23,513.34
June	7,552.19	4,601.13	5,827.74	9,946.40	17,549.36	10,146.13	-42.19%	9,614.15
July	7,682.30	5,985.49	6,206.92	17,737.22	13,668.65	21,647.93	58.38%	13,049.24
August	13,949.50	6,568.03	13,486.95	10,921.79	32,028.49	26,943.45	-15.88%	17,989.74
September	21,634.93	9,579.78	22,429.05	21,745.79	30,048.75	29,774.28	-0.91%	22,715.53
October	16,769.39	11,057.45	13,774.16	18,726.14	29,953.36		59.95%	18,056.10
November	-4,182.80	11,187.78	15,070.58	17,785.19	29,182.27		64.08%	13,808.60
December	4,750.60	5,273.24	7,547.72	17,476.46	19,698.95		12.72%	10,949.39
Total	125,349.48	111,665.35	144,841.14	186,708.50	265,837.11	224,409.34	42.38%	166,880.32
Year to Date	108,012.29	84,146.88	108,448.68	132,720.71	187,002.53	224,409.34	20.00%	

Emergency Services Sales Tax

	2017	2018	2019	2020	2021	2022	% Change	5-Year Ave.
January	5622.78	5693.58	22652.17	22081.29	35673.96	42007.94	0.18	25621.79
February	10692.95	9500.78	20193.73	38888.47	40698.37	51602.55	0.27	32176.78
March	7037.70	8924.66	28148.22	30899.33	39142.28	64129.75	0.64	34248.85
April	8265.99	22040.87	52719.27	32992.58	39017.29	54305.90	0.39	40215.18
May	11429.96	23915.42	32415.46	28328.62	53200.16	64390.89	0.21	40450.11
June	6362.70	13364.73	17201.80	20323.77	38209.24	36187.24	-0.05	25057.36
July	12960.82	36977.68	35279.36	29408.23	54965.11	58069.60	0.06	42940.00
August	29968.07	54297.30	74723.11	62795.11	139369.81	119039.47	-0.15	90044.96
September	45477.85	100795.88	126269.99	120650.92	164773.79	154524.58	-0.06	133403.03
October	33384.56	82850.46	103635.85	108852.60	139222.51		0.28	93589.20
November	39818.53	88859.04	101380.60	107416.93	136598.38		0.27	94814.70
December	14380.35	34697.06	45399.97	63130.77	93550.49		0.48	50231.73
Total	225402.27	481917.46	660019.53	665768.62	974421.39	644257.92	0.46	601505.85
Year to Date	137818.83	275510.90	409603.11	386368.32	605050.01	644257.92	0.06	

	Town Sales Tax						2022 % Change	5-Year Ave.
	2017	2018	2019	2020	2021	2022		
January	15,692.10	17,803.62	17,777.51	28,417.92	40,358.55	48,401.82	19.93%	30,551.88
February	27,691.72	24,144.03	26,379.98	39,259.76	45,122.36	56,934.96	26.18%	38,368.22
March	18,150.71	23,836.90	33,717.73	34,763.49	46,228.85	81,691.27	76.71%	44,047.65
April	21,740.67	24,868.07	75,356.86	37,422.14	46,611.62	60,354.74	29.48%	48,922.69
May	31,728.94	21,945.84	32,071.64	24,839.85	60,352.89	59,047.63	-2.16%	39,651.57
June	17,898.60	17,527.63	21,650.46	22,518.84	43,589.40	41,669.35	-4.40%	29,391.14
July	44,161.00	53,182.66	50,243.72	29,239.56	74,281.24	71,269.47	-4.05%	55,643.33
August	105,922.79	80,166.62	105,875.94	90,106.11	190,977.70	163,532.09	-14.37%	126,131.69
September	160,276.49	151,431.83	179,274.96	170,982.30	233,606.46	217,481.13	-6.90%	190,555.33
October	116,768.86	121,288.07	151,774.01	155,155.28	192,817.13		24.27%	147,560.67
November	163,456.93	130,755.88	146,395.83	153,802.89	189,389.35		23.14%	156,760.18
December	52,770.79	50,151.94	64,974.75	83,368.79	129,991.56		55.92%	76,251.57
TOTAL	776,259.60	717,103.10	905,493.39	869,876.93	1,293,327.11	800,382.46	48.68%	912,412.03
Year to Date	443,263.02	414,907.21	542,348.80	477,549.97	781,129.07	800,382.46	2.46%	

	Lodging Tax									
	2017	2018	2019	2020	2021	2022	% Change	5 yr. Average		
January	35.05	126.80	885.93	3,729.44	543.94	1,034.65	47.43%	1,064.23		
February	10,406.98	8,318.23	10,816.00	14,088.47	20,282.97	17,982.00	-12.80%	12,782.53		
March	786.00	3,097.25	145.07	454.00	660.00	11,775.69	94.40%	1,028.46		
April	1,543.39	2,002.98	33.00	-	1,489.56	1,091.00	-36.53%	1,013.79		
May	13,776.57	11,375.54	17,612.98	14,069.00	30,651.70	31,766.09	3.51%	17,497.16		
June	1,094.30	1,356.34	952.07	300.40	1,007.32	1,525.85	33.98%	942.09		
July	309.00	2,702.84	170.21	573.00	11,854.90	2,241.00	-429.00%	3,121.99		
August	10,799.07	11,477.00	14,372.43	13,978.56	57,659.81	31,076.00	-85.54%	21,657.37		
September	5,661.40	7,956.78	2,738.12	139.00	248.50		78.78%	3,348.76		
October	2,632.10	666.79	2,848.73	780.48	1,346.59		72.53%	1,654.94		
November	38,017.00	43,574.04	47,263.00	58,396.70	76,493.41		30.99%	52,748.83		
December	2,839.96	2,029.95	1,790.37	1,918.52	3,364.85		75.39%	2,388.73		
Total	87,900.82	94,684.54	99,627.91	108,427.57	205,603.55	98,492.28	89.62%	119,248.88		
Year to Date	38,750.36	40,456.98	44,987.69	47,192.87	124,150.20	98,492.28	-26.05%			

Remote Town Sales Tax - Month Collected				
	2019	2020	2021	2022
January	226.94	2,665.41	7,137.41	18,727.85
February	49,386.28	5,252.72	6,744.78	7,164.49
March	894.21	4,049.16	10,221.18	9,734.40
April	852.39	5,391.71	6,870.33	7,026.64
May	2,696.78	4,983.35	9,701.78	7,962.66
June	3,444.00	7,827.11	13,826.19	17,869.99
July	2,981.52	11,801.24	16,736.42	14,542.52
August	2,652.50	12,441.45	14,756.06	
September	2,286.57	10,544.18	12,717.24	
October	2,018.43	8,487.00	27,347.76	
November	2,827.77	5,994.61	9,195.92	
December	4,688.76	7,310.95	12,788.01	
TOTAL	74,956.15	86,748.89	148,043.08	83,028.55
YTD	60,482.12	41,970.70	71,238.09	83,028.55

Remote County Sales Tax - Month Collected				
	2019	2020	2021	2022
January	41.21	3,806.85	3,628.40	5,753.99
February	84.44	4,410.17	2,876.38	5,470.91
March	398.52	3,236.13	4,696.12	20,226.35
April	151.91	3,304.40	5,449.37	3,221.41
May	325.95	2,775.50	6,212.46	5,873.38
June	661.74	2,510.43	7,899.27	7,016.18
July	861.00	4,350.51	8,226.05	5,981.69
August	1,050.42	4,023.33	6,509.70	
September	1,028.90	4,221.36	6,365.70	
October	825.95	3,659.87	5,435.83	
November	924.35	2,933.00	7,277.72	
December	9,228.08	4,317.03	6,835.25	
TOTAL	15,582.47	43,548.58	71,412.25	53,543.91
YTD	2,524.77	24,393.99	38,988.05	53,543.91

Remote Emergency Services Sales Tax - Month Collected				
	2019	2020	2021	2022
January	167.86	4,051.74	6,735.19	15,300.16
February	30,969.48	6,049.12	6,019.09	7,896.61
March	809.27	4,560.71	9,322.30	18,724.25
April	628.71	5,443.90	7,699.31	7,612.23
May	1,892.28	4,857.16	9,945.76	8,646.96
June	2,570.26	6,471.47	13,577.53	15,552.84
July	2,405.48	10,111.26	15,600.53	12,826.79
August	3,702.92	10,307.22	13,290.24	
September	2,075.54	9,243.47	11,926.06	
October	1,780.63	7,604.14	20,488.41	
November	2,348.89	5,585.20	10,295.36	
December	8,712.17	7,274.58	12,263.74	
TOTAL	58,063.49	81,559.97	137,163.52	86,559.84
YTD	39,443.34	41,545.36	68,899.71	86,559.84

Total Remote Sales Tax - Month Collected				
	2019	2020	2021	2022
January	436.01	10,524.00	17,501.00	39,782.00
February	80,440.20	15,712.01	15,640.25	20,532.01
March	2,102.00	11,846.00	24,239.60	48,685.00
April	1,633.01	14,140.01	20,019.01	17,860.28
May	4,915.01	12,616.01	25,860.00	22,483.00
June	6,676.00	16,809.01	35,302.99	40,439.01
July	6,248.00	26,263.01	40,563.00	33,351.00
August	7,405.84	26,772.00	34,556.00	-
September	5,391.01	24,009.01	31,009.00	-
October	4,625.01	19,751.01	53,272.00	-
November	6,101.01	14,512.81	26,769.00	-
December	22,629.01	18,902.56	31,887.00	-
TOTAL	148,602.11	211,857.44	356,618.85	223,132.30
YTD	102,450.23	107,910.05	179,125.85	223,132.30

Town Sales Tax (month collected)

	2017		2018		2019			2020			2021	
			Local	Remote	Total	Local	Remote	Total	Local	Remote	Total	
January	18,150.71	23,836.90	33,491.06	226.94	33,718.00	32,098.08	2,665.41	34,763.49	39,091.44	7,137.41	46,228.85	
February	21,740.67	24,868.07	25,970.59	49,386.28	75,356.87	32,169.42	5,252.72	37,422.14	39,866.84	6,744.78	46,611.62	
March	31,728.94	21,945.84	31,177.43	894.21	32,071.64	20,790.69	4,049.16	24,839.85	50,131.71	10,221.18	60,352.89	
April	17,898.60	17,527.63	20,798.07	852.39	21,650.46	17,127.14	5,391.71	22,518.85	36,719.07	6,870.33	43,589.40	
May	44,161.00	53,182.66	47,514.29	2,696.78	50,211.07	24,256.22	4,983.35	29,239.57	64,579.46	9,701.78	74,281.24	
June	105,922.79	80,166.62	102,431.94	3,444.00	105,875.94	82,279.01	7,827.11	90,106.12	177,151.51	13,826.19	190,977.70	
July	160,276.49	151,431.83	176,293.44	2,981.52	179,274.96	159,181.07	11,801.24	170,982.31	216,870.04	16,736.42	233,606.46	
August	116,768.86	121,288.07	149,121.51	2,652.50	151,774.01	142,713.83	12,441.45	155,155.28	178,061.07	14,756.06	192,817.13	
September	163,456.93	130,755.88	144,109.26	2,286.57	146,395.83	143,258.72	10,544.18	153,802.90	176,672.11	12,717.24	189,389.35	
October	52,770.79	50,151.94	62,956.32	2,018.43	64,974.75	74,881.79	8,487.00	83,368.79	102,643.80	27,347.76	129,991.56	
November	17,803.62	17,777.51	25,590.15	2,827.77	28,417.92	34,363.94	5,994.61	40,358.55	39,205.90	9,195.92	48,401.82	
December	24,144.03	26,379.98	34,571.00	4,688.76	39,259.76	37,811.41	7,310.95	45,122.36	44,146.95	12,788.01	56,934.96	
TOTAL	774,823.44	719,312.94	854,025.06	74,956.15	928,981.21	800,931.32	86,748.89	887,680.21	1,165,139.90	148,043.08	1,313,182.98	

Emergency Services Sales Tax (month collected)

	2017	2018	2019			2020			2021		
			Local	Remote	Total	Local	Remote	Total	Local	Remote	Total
January	7,037.70	8,924.66	27,980.65	167.86	28,148.51	26,847.59	4,051.74	30,899.33	32,447.80	6,735.19	39,182.99
February	8,265.99	22,040.87	21,749.81	30,969.48	52,719.29	26,943.46	6,049.12	32,992.58	33,038.78	6,019.09	39,057.87
March	11,429.96	23,915.42	31,606.19	809.27	32,415.46	18,988.97	4,560.71	23,549.68	43,877.86	9,322.30	53,200.16
April	6,362.70	58,262.95	16,573.10	628.71	17,201.81	14,879.87	5,443.90	20,323.77	30,509.93	7,699.31	38,209.24
May	12,960.82	36,977.68	33,423.78	1,892.28	35,316.06	24,551.07	4,857.16	29,408.23	45,019.35	9,945.76	54,965.11
June	29,968.07	54,297.30	72,152.85	2,570.26	74,723.11	56,773.64	6,471.47	63,245.11	125,792.28	13,577.53	139,369.81
July	45,477.85	100,795.88	123,864.51	2,405.48	126,269.99	110,539.66	10,111.26	120,650.92	149,173.26	15,600.53	164,773.79
August	33,384.56	82,850.46	101,317.76	3,702.92	105,020.68	98,545.37	10,307.22	108,852.59	125,932.27	13,290.24	139,222.51
September	39,818.53	88,859.04	99,005.06	2,075.54	101,080.60	98,173.46	9,243.47	107,416.93	124,672.32	11,926.06	136,598.38
October	14,380.35	34,697.06	43,619.35	1,780.63	45,399.98	55,526.63	7,604.14	63,130.77	73,062.08	20,488.41	93,550.49
November	5,693.58	22,652.17	19,732.41	2,348.89	22,081.30	30,125.87	5,585.20	35,711.07	31,712.58	10,295.36	42,007.94
December	9,500.78	30,306.85	30,176.30	8,712.17	38,888.47	33,466.13	7,274.58	40,740.71	39,338.81	12,263.74	51,602.55
Total	224,280.90	564,580.34	621,201.77	58,063.49	679,265.26	595,361.72	81,559.97	676,921.69	854,577.32	137,163.52	991,740.84

County Sales Tax (month collected)

	2017	2018	2019			2020			2021		
			Local	Remote	Total	Local	Remote	Total	Local	Remote	Total
January	10,000.08	11,861.72	11,205.30	41.21	11,246.51	10,788.33	3,806.85	14,595.18	12,774.47	3,628.40	16,402.87
February	11,323.27	10,399.61	8,772.61	84.44	8,857.05	10,870.13	4,410.17	15,280.30	12,943.71	2,876.38	15,820.09
March	13,990.92	16,321.32	19,310.39	398.52	19,708.91	9,542.34	3,236.13	12,778.47	20,077.43	4,696.12	24,773.55
April	7,552.19	4,601.13	5,675.84	151.91	5,827.75	6,642.00	3,304.40	9,946.40	12,099.99	5,449.37	17,549.36
May	7,682.30	5,985.49	5,876.94	325.95	6,202.89	14,961.72	2,775.50	17,737.22	7,456.19	6,212.46	13,668.65
June	13,949.50	6,568.03	12,825.21	661.74	13,486.95	8,411.36	2,510.43	10,921.79	24,129.22	7,899.27	32,028.49
July	21,634.93	9,579.78	21,568.05	861.00	22,429.05	17,395.28	4,350.51	21,745.79	21,822.70	8,226.05	30,048.75
August	16,769.39	11,057.45	12,723.74	1,050.42	13,774.16	14,702.81	4,023.33	18,726.14	23,443.66	6,509.70	29,953.36
September	-4,182.80	11,187.78	14,041.68	1,028.90	15,070.58	13,563.83	4,221.36	17,785.19	22,816.57	6,365.70	29,182.27
October	4,750.60	5,273.24	6,721.34	825.95	7,547.29	13,816.59	3,659.87	17,476.46	14,263.13	5,435.83	19,698.96
November	4,970.71	7,799.87	5,930.45	924.35	6,854.80	13,790.50	2,933.00	16,723.50	11,537.52	7,277.72	18,815.24
December	13,859.09	12,885.86	13,632.71	9,228.08	22,860.79	15,682.24	4,317.03	19,999.27	18,779.24	6,835.25	25,614.49
Total	122,300.18	113,521.28	138,284.26	15,582.47	153,866.73	150,167.13	43,548.58	193,715.71	202,143.83	71,412.25	273,556.08



Willy Tookey <admin@sanjuancolorado.us>

FW: [EXTERNAL] Off road in wetlands near Molas camping area

1 message

Kaminsky, Jon F <jkaminsky@blm.gov>
To: Willy Tookey <admin@sanjuancolorado.us>

Wed, Aug 31, 2022 at 10:41 AM

Hi Willy-

The fencing BLM is proposing on the Molas camping area came up at the last meeting I attended with the BOCC. As I recall, there was some question about the need for this. I think these photos illustrate the fragility of this ecosystem and the kinds of impacts that vehicles can have.

Can you please distribute to the BOCC, as I do not have all their email addresses?

Thanks Willy,

Jon

--

*Thank you,**Jon*

Jon F. Kaminsky, P.G.; L.HG**Field Manager**

USDI-BLM Gunnison Field Office

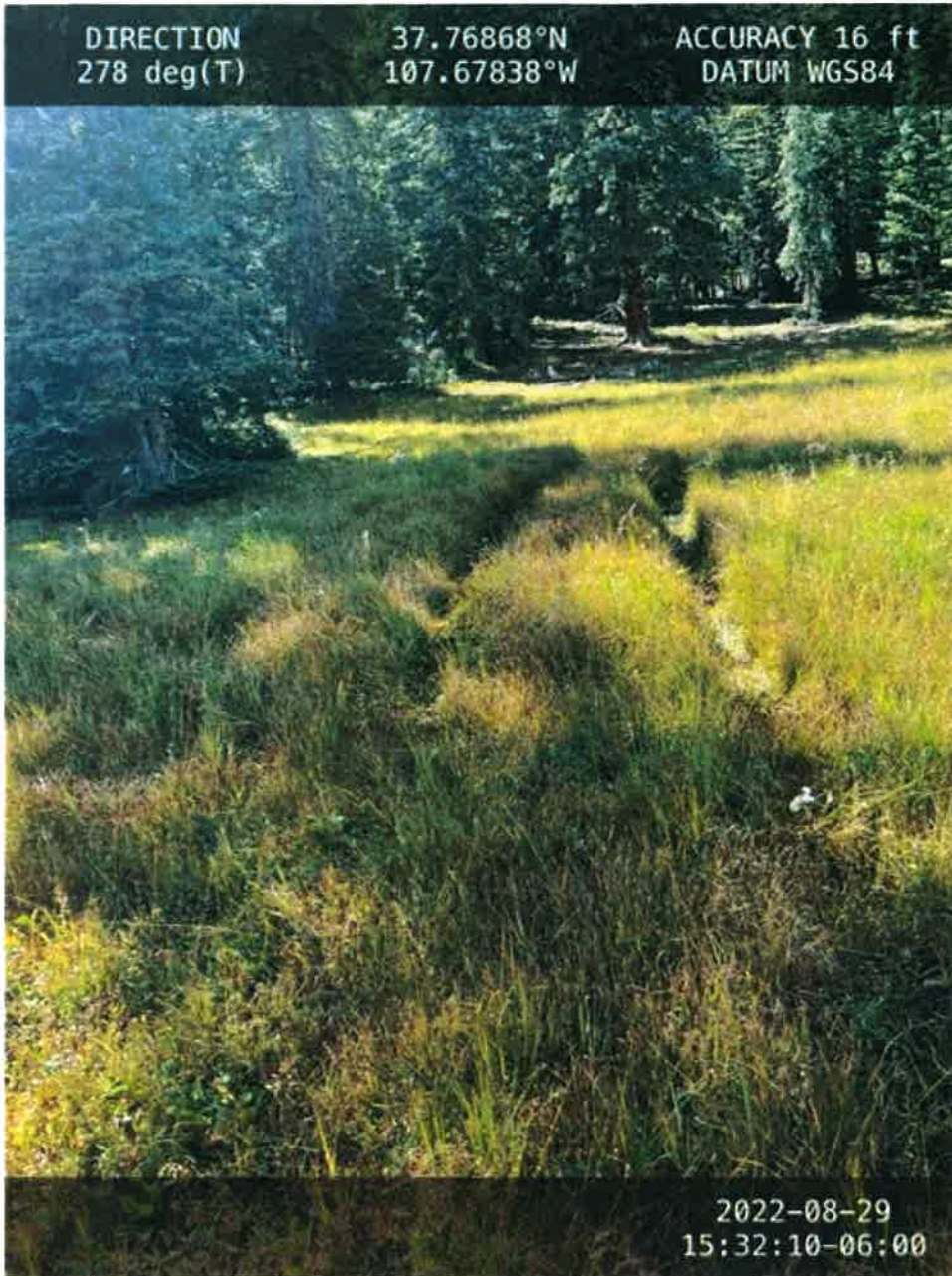
210 West Spencer Ave. Suite A.,

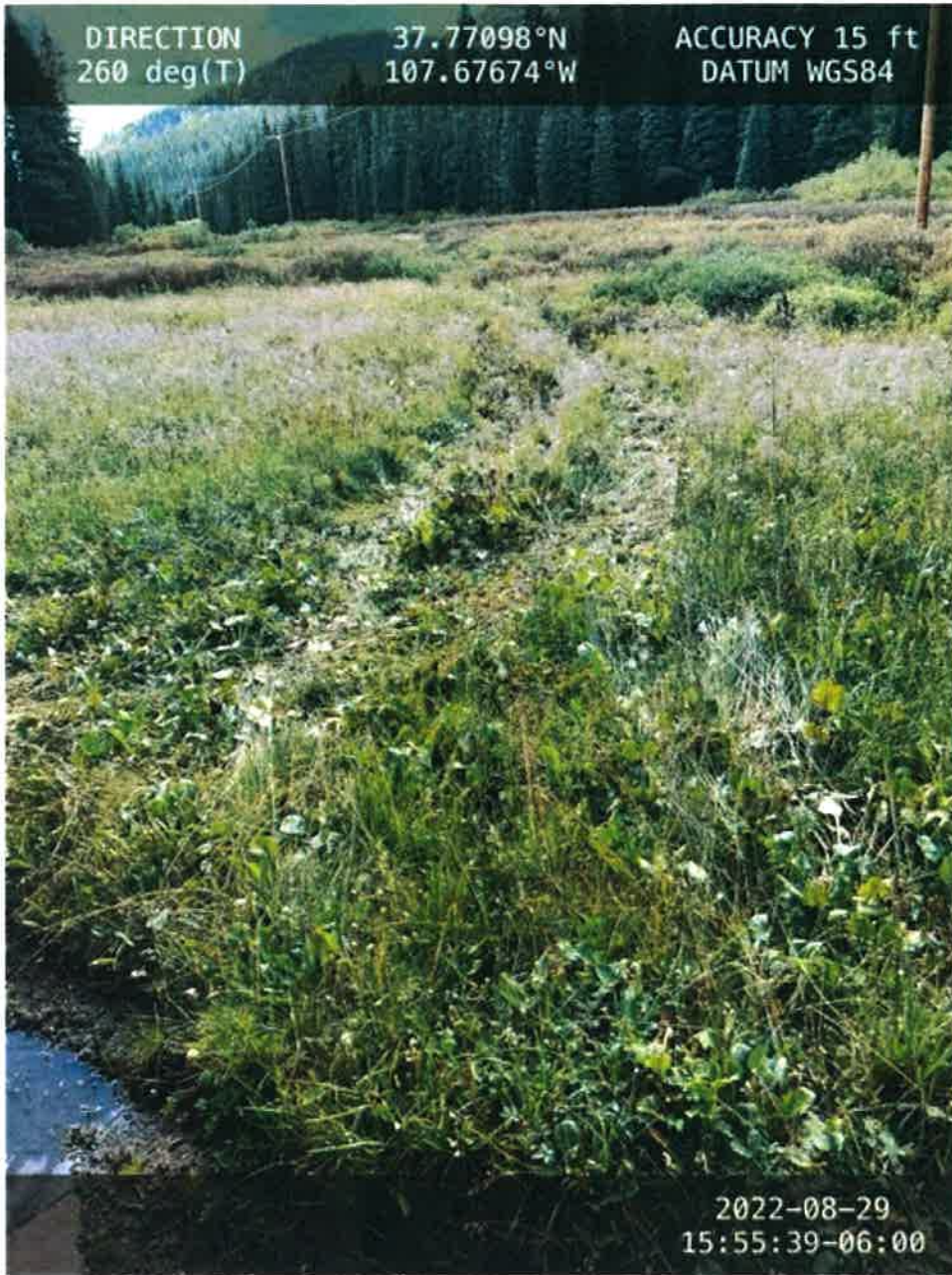
Gunnison, Colorado, 81230

Office: 970-642-4941 Mobile: 970-456-8157

INTERIOR REGION 7

From: Scot Jackson <mtnscotsman@hotmail.com>
Sent: Tuesday, August 30, 2022 10:13 AM
To: Mast, Megan L <mmast@blm.gov>
Subject: [EXTERNAL] Off road in wetlands near Molas camping area





Sent from my iPhone

November 2022

No.	Sun	Mon	Tue	Wed	Thu	Fri	Sat
44			1	2	3	4	5
45	6	7	8	9	10	11 Veterans Day	12
46	13	14	15	16	17	18	19
47	20	21	22	23	24 Thanksgiving Day	25 Black Friday	26
48	27	28	29	30			

Date: September 12, 2022.
For: September 14 Board of County Commissioners Meeting.
From: Planning Department.
Regarding: Summary of Recent Planning Department Work.

SAN JUAN COUNTY



PO Box 466
Silverton, CO 81433

The Planning Department has been working on these County applications:

- The Planning Department and other County Staff have collectively been working on the permitting for the Improvement Permit Application, Two Proposed 11-Unit Condo Buildings, on a parcel known as Phase 1, at the Cascade Village PUD on Highway 550. An updated submittal from the Architect was received at the County Courthouse on September 9.
- The Planning Department received an updated application, and notified the adjacent land owners, for the Improvement Permit Application, Proposed Hawn Cabin, Log Cabin Lode, County Road 14, near Red Mountain Pass, scheduled to be reviewed by the Planning Commission on September 20.
- The Planning Department received an updated application, and notified the adjacent land owners, for the Improvement Permit Application, Proposed Robertson Accessory Dwelling Unit (ADU), Tract 13, Know Your Neighbor Subdivision, Lime Creek Road, which will be considered by the Planning Commission on September 20.
- A variance regarding the construction of a proposed berm/screening within the sixty feet wide County Road easement was approved by the Commissioners on August 24, and coordination by phone is ongoing with the applicant, for the Improvement Permit, Proposed Anesi Cabin, Carolina Mill Site, near Deer Park. The final list of the Conditions of Approval will be sent this week to the applicant, to sign, notarize, and file at the Courthouse, and depending on the weather the construction may begin soon, starting with the proposed septic system.
- Coordination is occurring with the applicant and County Administrator, regarding incoming supplemental information, for the Proposed Plat Amendment and Improvement Permit Application, Proposed Sams Residence, Lot 1, Cole Ranch Subdivision, with the Continued Public Hearing tentatively scheduled for the September 28 County Commissioners meeting.
- A site visit occurred on the Shrine Road near Highway 550 with the applicant/owner and consultant regarding a proposed future single family cabin on a Portion of the Ophir Placer.
- The San Juan Regional Planning Commission will receive a presentation on the updated draft Town/County Master Plan during a work session scheduled to occur at 5 PM before their regular 7 PM meeting on September 20.
- Several new partially-complete County applications have been received by email in the past two weeks. Ongoing coordination is occurring with many persons who are slowly preparing County applications, regarding County regulations and application submittal requirements.
- The Planning & Building Department staff (Lisa Adair, Bill MacDougall, Bevan Harris) have recently been receiving a lot of inquiries about proposed development on relatively remote, low price claims, and in response we typically need to provide info on the County regulations, State/SJBPH septic system regulations, and County/BLM legal access requirements.
- The County Commissioners and citizens can contact me with any Planning questions at my County email address "planner@sanjuancolorado.us"

SAN JUAN COUNTY ROAD DEPARTMENT

Monthly Road Maintenance Report

AUGUST 2022

County road #110, blading, rock removal and clean culverts etc.

1-772G grader, 8 hours.

2-772G grader, 4 hours,

936 loader, 3 hours.

Pickups, 8 hours.

County road #2 Eureka, grading, spot repairs, ditching and culvert clearing.

1-772G grader, 10 hours.

2-772G grader, 4 hours.

936 loader, 3 hours.

Miesel Backhoe, 6 hours.

Pickups, 6 hours.

County road #7 South Mineral, blading, pull ditches before the Forest Service gravel project. Battle with the beavers flooding road and causing damaged broke the dams several times and removed and hauled off. Repaired road twice hauled about 110 tons fill material. WE may have to cut the bank and build the road up a few feet! Getting to be a real pain.

1-772G grader, 13 hours.

2-772G grader, 3 hours.

936 loader, 6 hours.

Miesels backhoe, 6 hours.

Pickups, 4 hours.

County road #20-20A Lacawanna, Aspen town, road repair rock and tree removal and grade and cut and clean ditches etc.

D6N tractor, 15 hours.

Pickups. 2 hours.

County road #22 River road, remove damaged culvert and mud slips.

1-772G grader, 1 hour.

County road #23 Maggie Gulch, rock removal, road repairs and mudslide removal and cut ditches and culvert repair.

D6T tractor. 25 hours.

Pickups, 6 hours.

772 grader, 1 hour.

County Road #23A Mascot mine, Had to remove road closure a chain and lock had been installed again. WE removed the chain and old steel posts this is the third time! Worked the road clean slough and rocks and graded. Filled mudhole etc.

D6T tractor, 8 hours.

Pickup, 1 hour.

County road #24 Minnie Gulch, Work road and remove rocks and repair section of the road. Worked on the culvert across the creek it was getting narrow and dangerous! Cut and filled and installed large trees to hold the fill and use as cribbing. Worked on the road up the end of the road.

D6T tractor, 38 hours.

936 loader, 3 hours.

772G grader, 2 hours.

Pickups, 6 hours.

County road #57 Kitty Mack mine, rock and tree removal. Repair runoff damage etc.

D6T tractor, 6 hours,

County road #8 Ophir Pass, grade and pull ditches and rock removal.

2-772G grader, 18 hours.

Pickups, 2 hours.

County road #12 Clear Lake, rock removal and grade lower end.

1-772G grader, 2 hours.

County road #61 Monarch mine/ Porcupine Gulch, Road was washed and rutted from rain. Cut in ditches on the switch backs and rock and slough removal. Cleanup out parking and turn around area at the end of the road.

D6N tractor, 8 hours.

772G grader, 1 hour.

County road #30 Little Molas, grade and fill holes etc.

2-772G grader, 7 hours.

County road #4-4A Cunningham Gulch, brake beaver dam flooding road several times and grade road to the Mine tour.

772G grader, 3 hours,

936 loader, 2 hours.

Equipment maintenance and Repairs, 36 hours.

Hired Rusty Melcher as operator. He will start on October 1st!!