

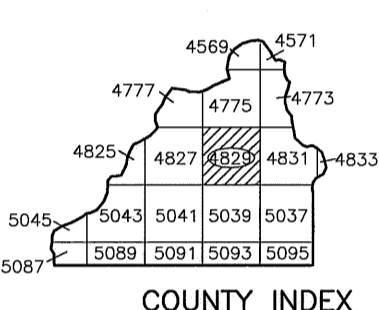
SI LVERTON, COLORADO



Block Numbers are printed in alleys. Lot numbers are on ends of each lot.
Parcel groupings may have changed since this map was created.

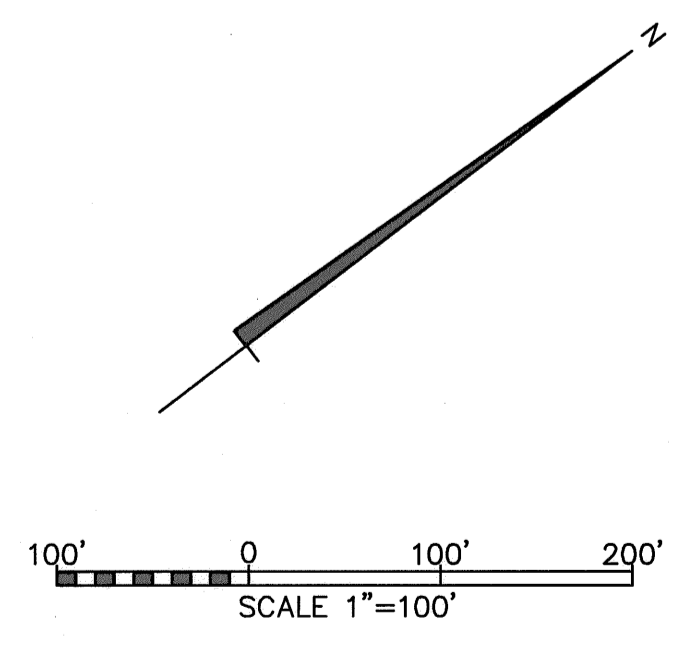
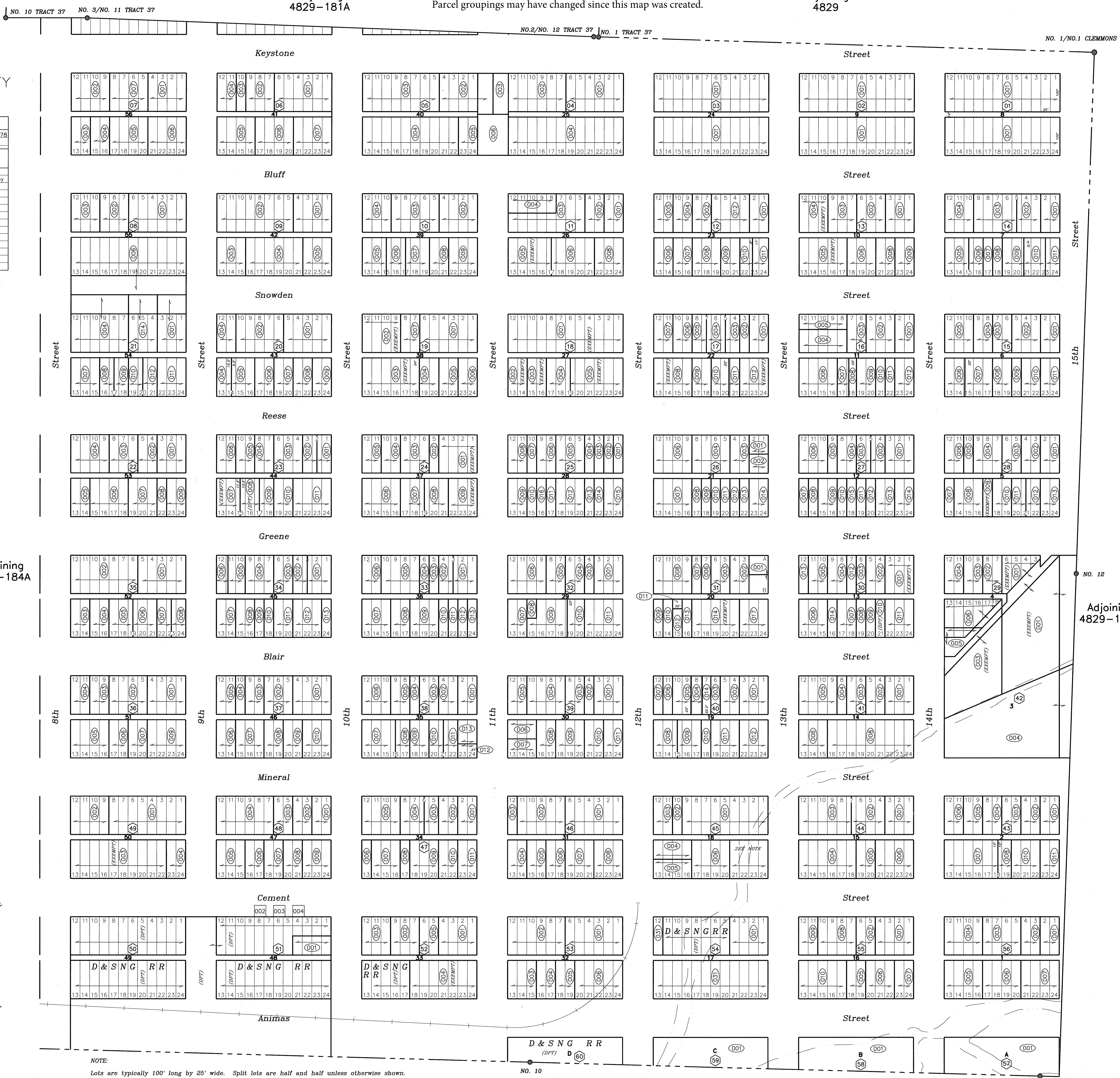
SAN JUAN COUNTY

CLINT SHERRILL & ASSOC.
DRAWN BY: Doss Vandenberg DATE: 12/28/78
CHECKED BY: DATE:
REVISED:
Date: By: Remarks:
03/08/96 Terry Morris Map was updated
independently with information provided by
San Juan County Assessor's Office.



Adjoining 4829-184A

6	5	4	3	2	1
7	8	9	10	11	12
18	17	16	15	14	13
19	20	21	22	23	24
30	29	28	27	26	25
31	32	33	34	35	36



WARNING: This map is for assessment purposes ONLY and is not necessarily accurate by surveyor's standards.

NOTE:
Lots are typically 100' long by 25' wide. Split lots are half and half unless otherwise shown.
Named Streets are 100' wide, Numbered Streets are 80' wide unless otherwise shown.
Lots 21-24, Block 18 were removed from Tax Schedule in 1982.
Location of the boundary between the original Silverton Townsite and Reese's Addition varies with recorded descriptions and surveys.
City Limits are defined by the recorded BLM surveys of 1963 and 1979. Conflicts occur between these surveys and original Town and Addition Plats and other recorded and deposited surveys.

Adjoining 4829

4829-171A
T41N R7W Sec. 17 NE1/4
SILVERTON TOWNSITE

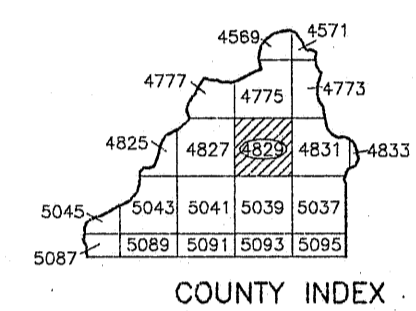
Silverton Colorado Assessor's Parcel Map page 2 of 4

Block Numbers are printed in alleys. Lot numbers are on ends of each lot.
Parcel groupings may have changed since this map was created.

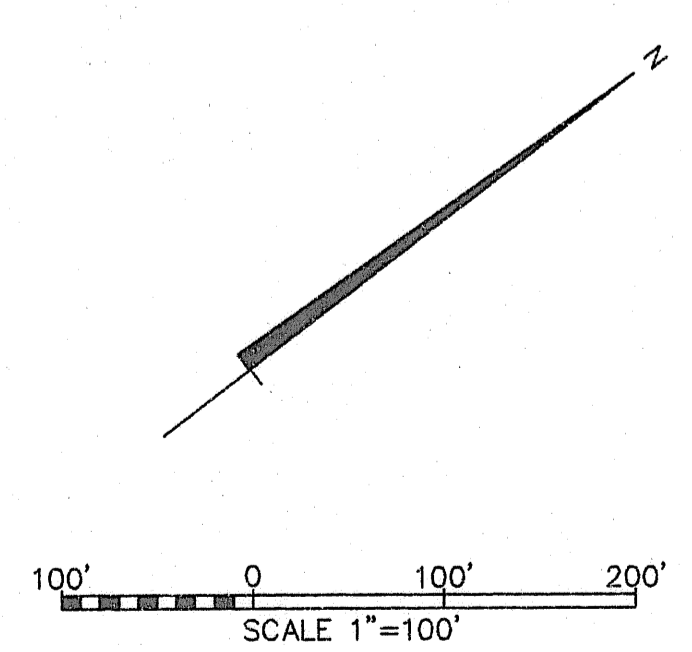
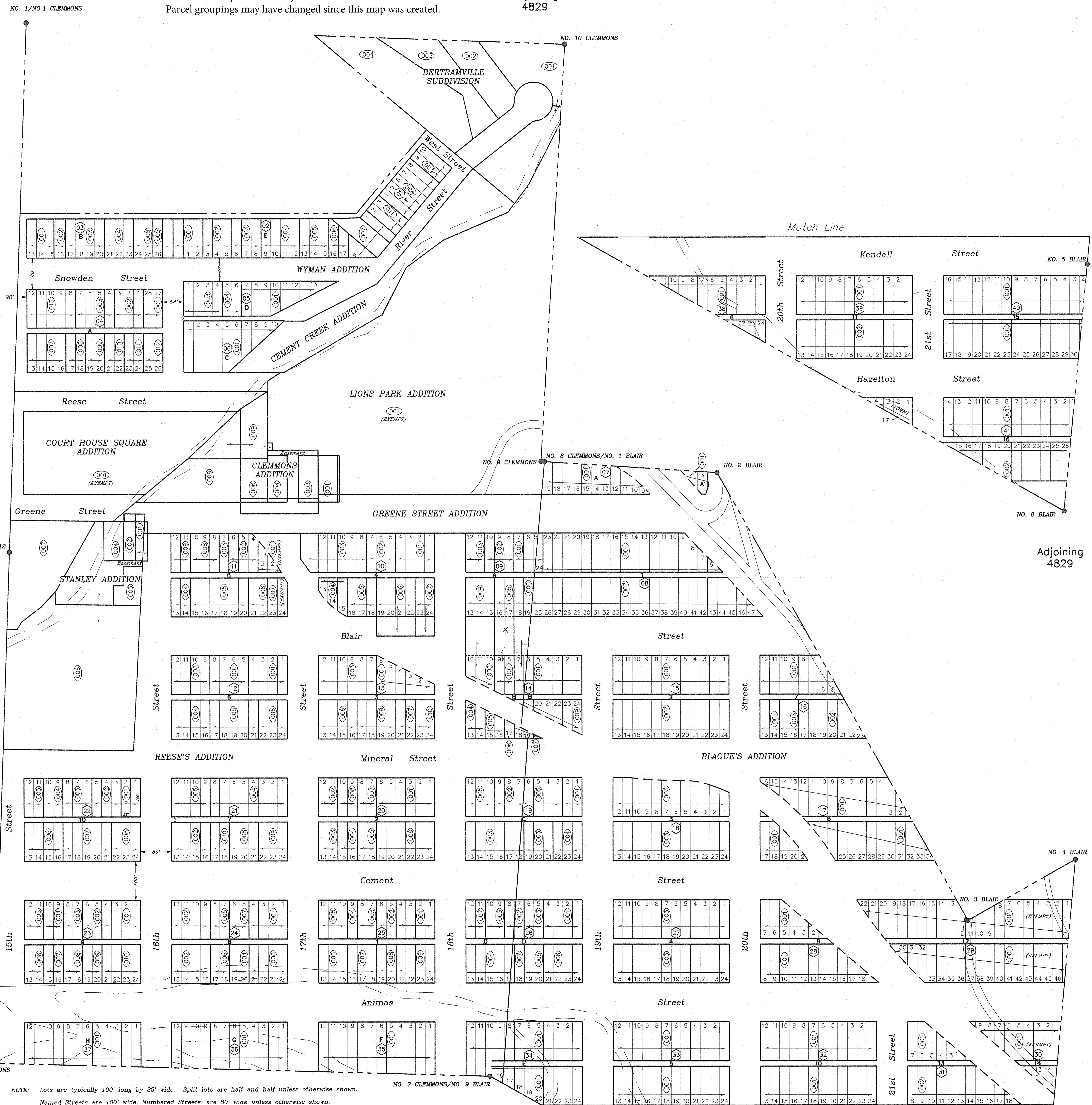
Adjoining
4829

SAN JUAN COUNTY

CLINT SHERRILL & ASSOC.		
DRAWN BY: Doss Vandenberg	DATE: 12/28/78	
CHECKED BY:	DATE:	
REVISED:		
Date:	By:	Remarks:
03/08/96	Terry Morris	Map was updated
Independently with information provided by		
San Juan County Assessor's Office.		



6	5	4	3	2	1
7	8	9	10	11	12
18	17	16	15	14	13
19	20	21	22	23	24
30	29	28	27	26	25
31	32	33	34	35	36



WARNING: This map is for assessment purposes ONLY and is not necessarily accurate by surveyor's standards.

NOTE: Lots are typically 100' long by 25' wide. Split lots are half and half unless otherwise shown.
 Named Streets are 100' wide, Numbered Streets are 80' wide unless otherwise shown.
 Location of boundary between Reese's and Blague's Addition varies with deposited surveys.
 Location of the boundary between the original Silverton Townsite and Reese's Addition varies with recorded descriptions and surveys.
 Subdivision of the Stanley Placer is based on plat recorded in Book 205, Page 622, and Ordinance No. 194. Exact location of the Stanley Placer is uncertain due to conflicts with adjoining surveys. No record was found showing that all parts of the Stanley Placer have been annexed into the Town.
 City Limits are defined by the recorded BLM surveys of 1963 and 1979. Conflicts occur between these surveys and original Town and Addition Plats and other recorded and deposited surveys.

4829-171A
T41N R7W Sec. 17 NE1/4
SILVERTON TOWNSITE

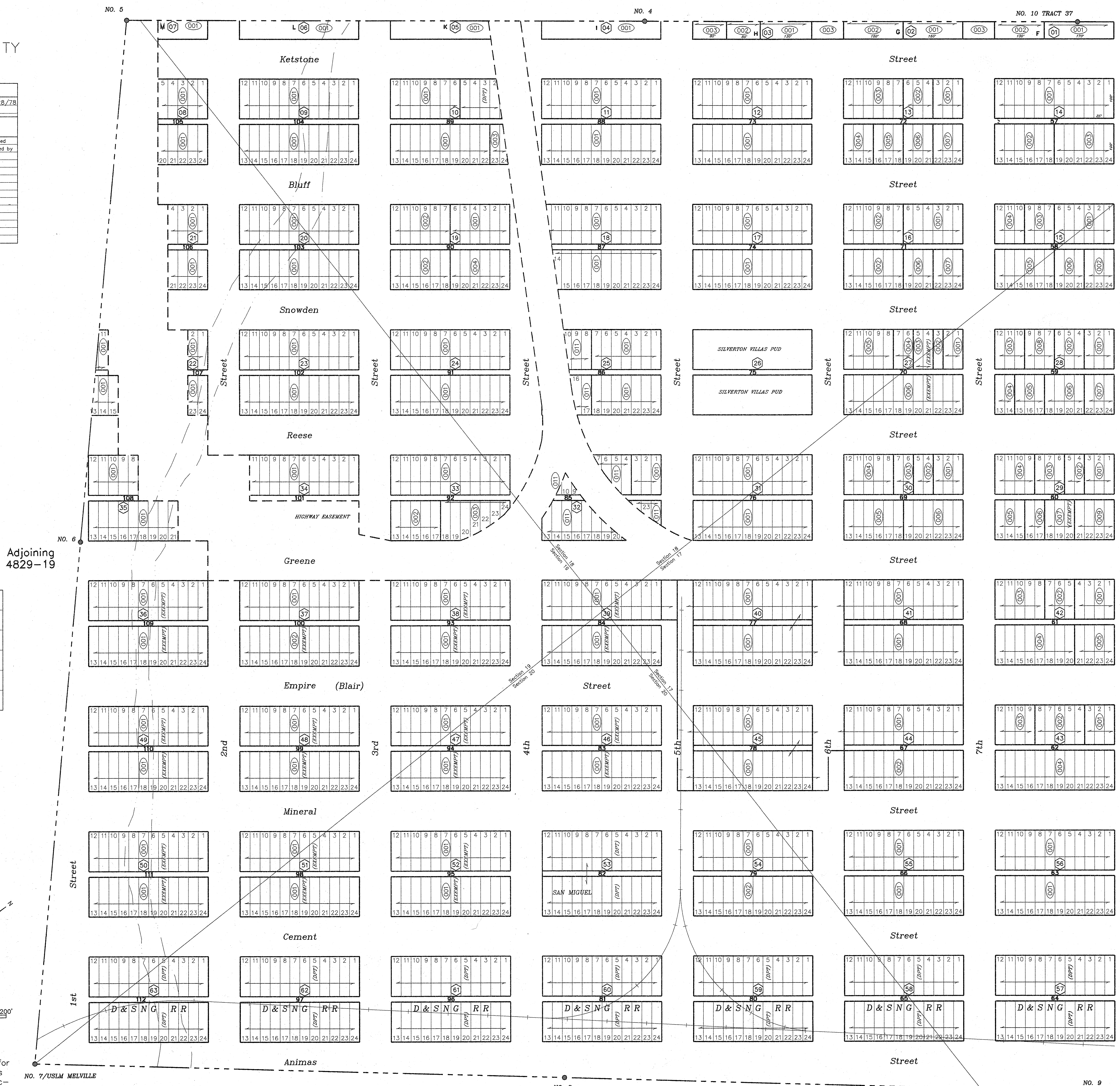
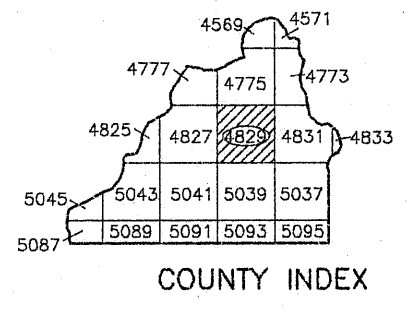
Silverton Colorado Assessor's Parcel Map page 3 of 4

Block Numbers are printed in alleys. Lot numbers are on ends of each lot.
Parcel groupings may have changed since this map was created.

Adjoining
4829

SAN JUAN COUNTY

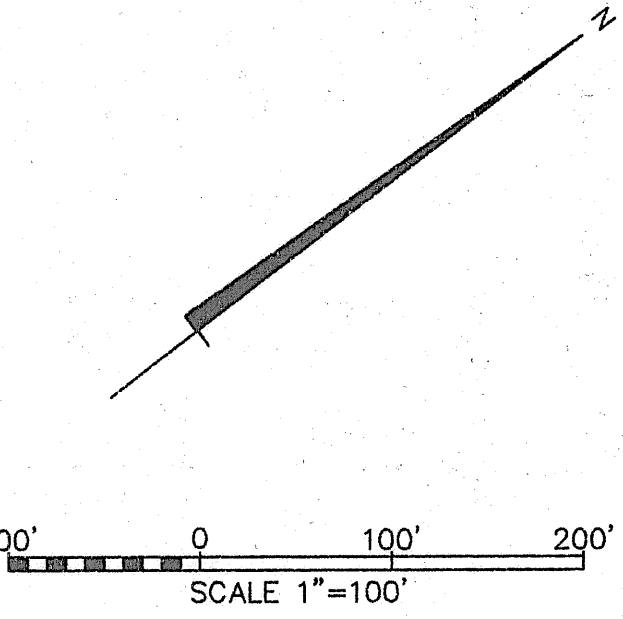
CLINT SHERRILL & ASSOC.	
DRAWN BY: Doss Vandenberg	DATE: 12/28/78
CHECKED BY: Terry Morris	DATE:
REVISED:	
Date:	By:
03/08/96	Terry Morris
Remarks: Map was updated independently with information provided by San Juan County Assessor's Office.	



Adjoining
4829-19

Adjoining
4829-172A

6	5	4	3	2	1
7	8	9	10	11	12
18	17	16	15	14	13
19	20	21	22	23	24
30	29	28	27	26	25
31	32	33	34	35	36



WARNING: This map is for assessment purposes ONLY and is not necessarily accurate by surveyor's standards.

NOTE:
 Lots are typically 100' long by 25' wide. Split lots are half and half unless otherwise shown.
 Named Streets are 100' wide, Numbered Streets are 80' wide unless otherwise shown.
 Highway and Railroad R.O.W.'s plotted from aerial photo.
 City Limits are defined by the recorded BLM surveys of 1963 and 1979. Conflicts occur between these surveys and original Town and Addition Plats and other recorded and deposited surveys.

Adjoining
4829

